

WAAS CH <b>82431</b> <b>W34A</b>	APP CRS <b>344°</b>	Rwy Idg TDZE Apt Elev	<b>4000</b> <b>1206</b> <b>1206</b>
--	------------------------	-----------------------------	---

# RNAV (GPS) RWY 34

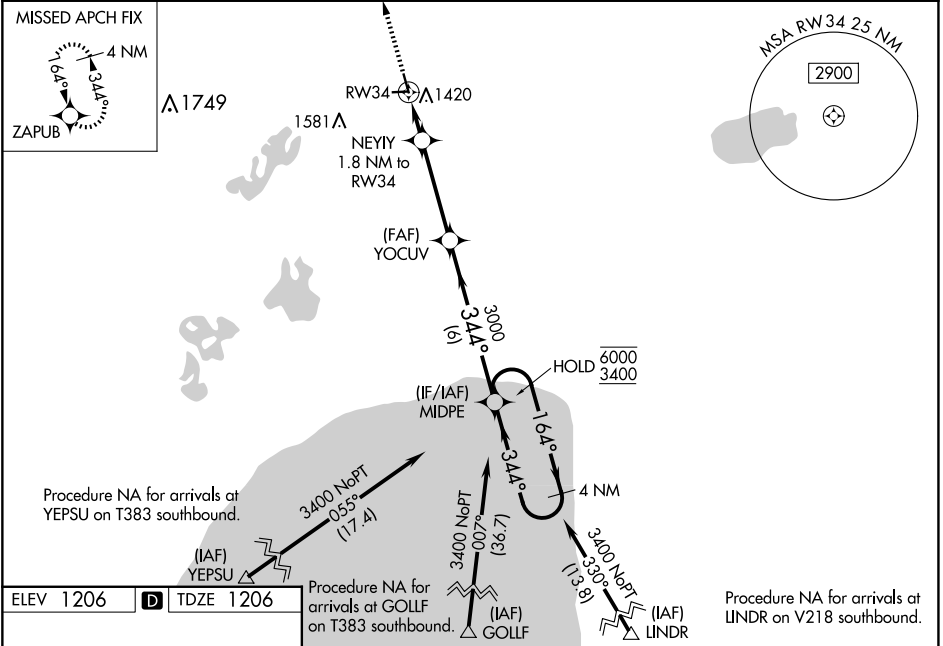
AITKIN MUNI/STEVE KURTZ FLD (AIT)

RNP APCH - GPS.

**⚠** Circling NA to Rwy 8 and 26. Rwy 34 helicopter visibility reduction below 3/4 SM NA. Baro-VNAV NA when using HZX altimeter setting. For uncompensated Baro-VNAV systems, LNAV/VNAV NA below -17°C or above 54°C. When local altimeter setting not received, use HZX altimeter setting: increase LPV DA to 1588 feet and all visibilities 1/2 SM; increase LNAV/VNAV DA to 1660 feet and all visibilities 1/4 SM; increase all MDAs 40 feet and LNAV visibility Cat C 1/4 SM.

MISSED APPROACH: Climb to 3400 direct ZAPUB and hold.

AWOS-3 <b>118.675</b>	MINNEAPOLIS CENTER <b>118.05 239.0</b>	UNICOM <b>123.05 (CTAF) 0</b>
--------------------------	---	----------------------------------

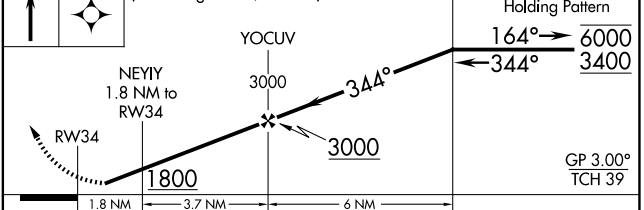
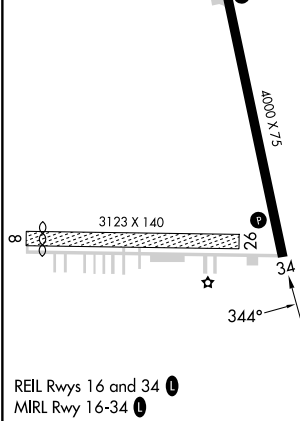


ELEV 1206	<b>D</b>	TDZE 1206
-----------	----------	-----------

Procedure NA for arrivals at YEPSU on T383 southbound.

Procedure NA for arrivals at GOLFF on T383 southbound.

Procedure NA for arrivals at LINDR on V218 southbound.



CATEGORY	A	B	C	D
LPV DA	1548-1 1/8	342 (400-1 1/8)		NA
LNAV/VNAV DA	1620-1 3/8	414 (500-1 1/8)		NA
LNAV MDA	1720-1	514 (600-1)	1720-1 3/8 514 (600-1 1/8)	NA
<b>C</b> CIRCLING	1780-1	574 (600-1)	1900-2 694 (700-2)	NA

NC-1, 20 FEB 2025 to 20 MAR 2025

NC-1, 20 FEB 2025 to 20 MAR 2025