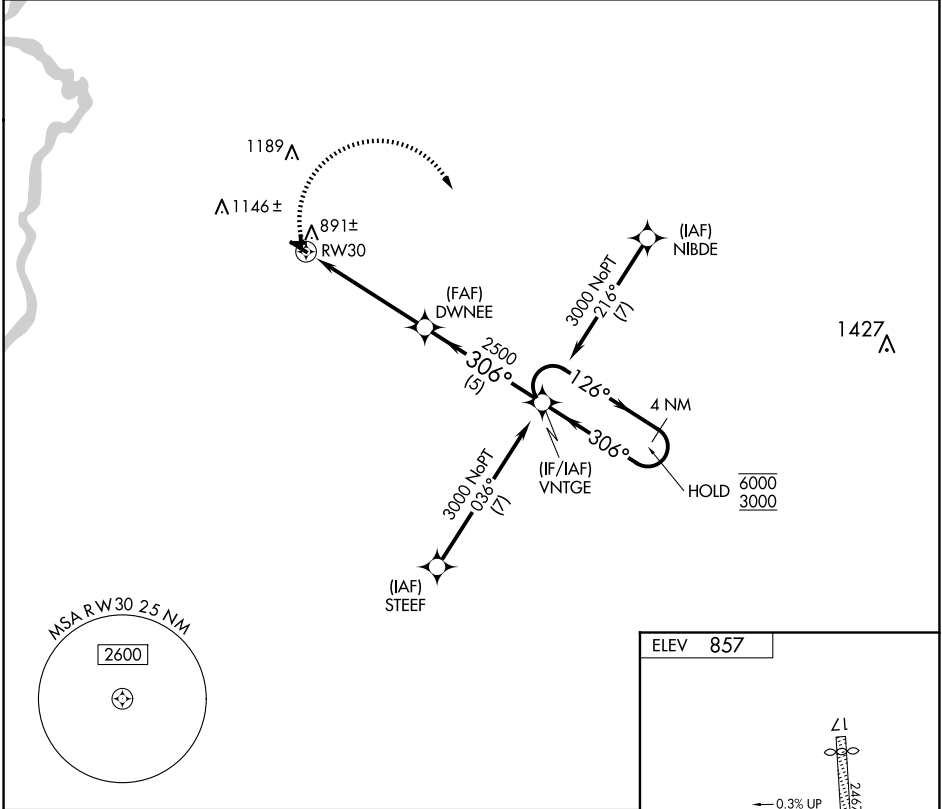


APP CRS	Rwy Idg	N/A
306°	TDZE	N/A
	Apt Elev	857

RNAV (GPS)-A

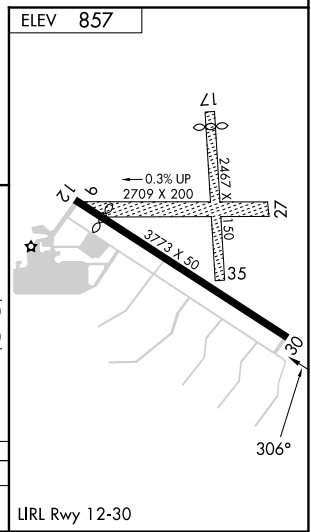
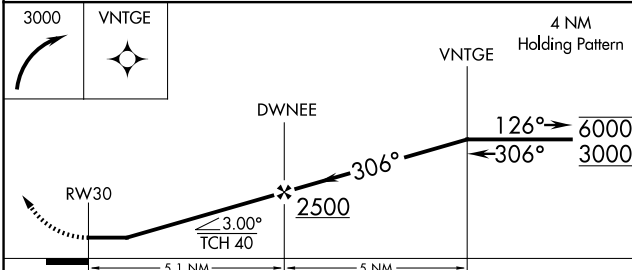
POPLAR GROVE (C77)

RNP APCH - GPS.		MISSED APPROACH: Climbing right turn to 3000 direct VNTGE and hold.
<p>▼ Circling NA to Rwys 09, 17, 27 and 35. Procedure NA at night. ▲ NA Rwy 12 and 30 helicopter visibility reduction below 1 SM NA. Use Chicago/Rockford altimeter setting.</p>		
RFD ASOS 127.6	ROCKFORD APP CON 121.0 327.0	UNICOM 122.8 (CTAF)



EC-3, 20 FEB 2025 to 20 MAR 2025

EC-3, 20 FEB 2025 to 20 MAR 2025



CATEGORY	A	B	C	D
CIRCLING	1380-1	523 (600-1)	1560-2 703 (800-2)	NA