

| | | | |
|--|------------------------|---|-------------|
| WAAS CH 86922 W03A | APP CRS 033° | Rwy Idg TDZE 714 Apt Elev 718 | 5001 |
|--|------------------------|---|-------------|

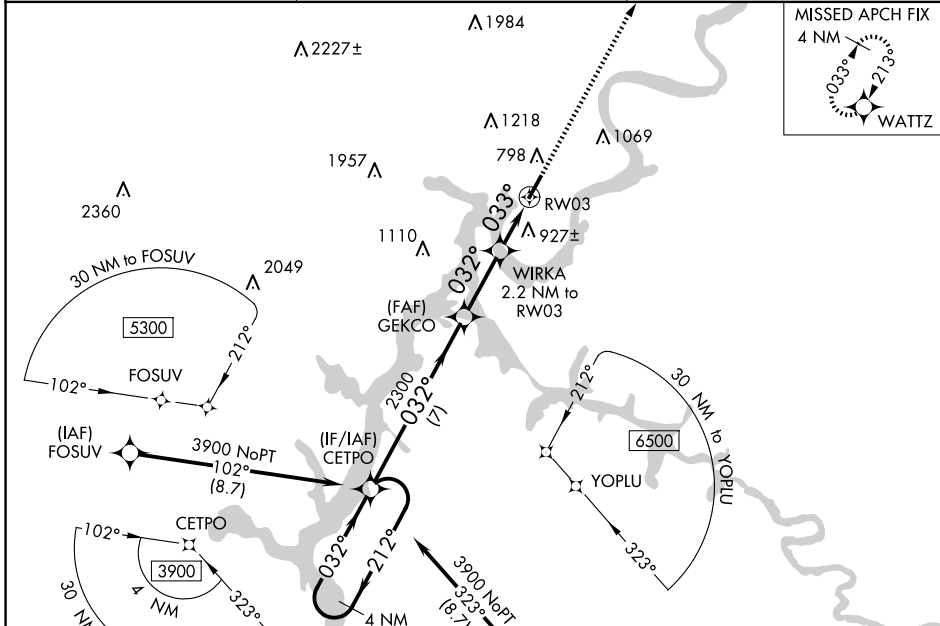
RNAV (GPS) RWY 3

MARK ANTON (2A) (M)

▼ Baro-VNAV NA when using Chattanooga altimeter setting. For uncompensated Baro-VNAV systems, LNAV/VNAV NA below -16°C (4°F) or above 39°C (102°F). DME/DME RNP-0.3 NA. VDP NA with Chattanooga altimeter setting. When VGSI inop, Circling Rwy 21 NA at night. When local altimeter setting not received, use Chattanooga altimeter setting; increase LPV DA to 1039 feet, LNAV/VNAV DA to 1288 feet, and visibility LPV and LNAV/VNAV all Cats ½ SM; increase all MDA 80 feet and visibility LNAV Cat C/D ¼ SM and Circling Cat C ½ SM. Rwy 3 helicopter visibility reduction below ¾ SM NA. Rwy 21 helicopter visibility reduction below 1 SM NA.

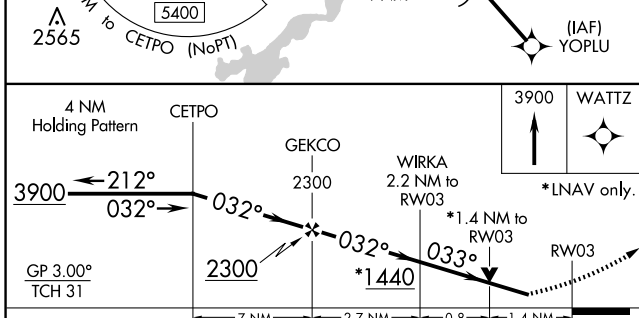
MISSED APPROACH:
Climb to 3900 direct WATTZ and hold.

| | | |
|--------------------------|---|-------------------------------|
| AWOS-3 135.075 | CHATTANOOGA APP CON ★ 125.1 379.1 | UNICOM 123.0 (CTAF) |
|--------------------------|---|-------------------------------|

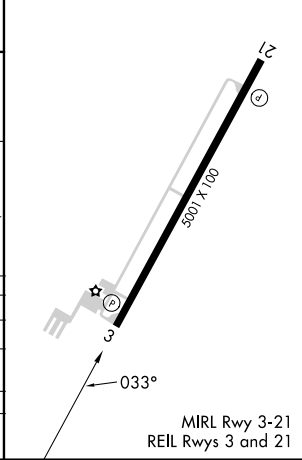


SE-1, 20 FEB 2025 to 20 MAR 2025

SE-1, 20 FEB 2025 to 20 MAR 2025



| | |
|----------|----------|
| ELEV 718 | TDZE 714 |
|----------|----------|



| CATEGORY | A | B | C | D |
|--------------|-----------------------|-----------------------|-----------------------------|------------------------|
| LPV DA | | 964-7/8 | 250 (300-7/8) | |
| LNAV/VNAV DA | | 1213-13/4 | 499 (500-13/4) | |
| LNAV MDA | 1180-1 | 466 (500-1) | 1180-13/8 | 466 (500-13/8) |
| CIRCLING | 1380-1 662 (700-1) | 1420-1 702 (800-1) | 1520-21/4 802 (900-21/4) | 1620-3 902 (1000-3) |