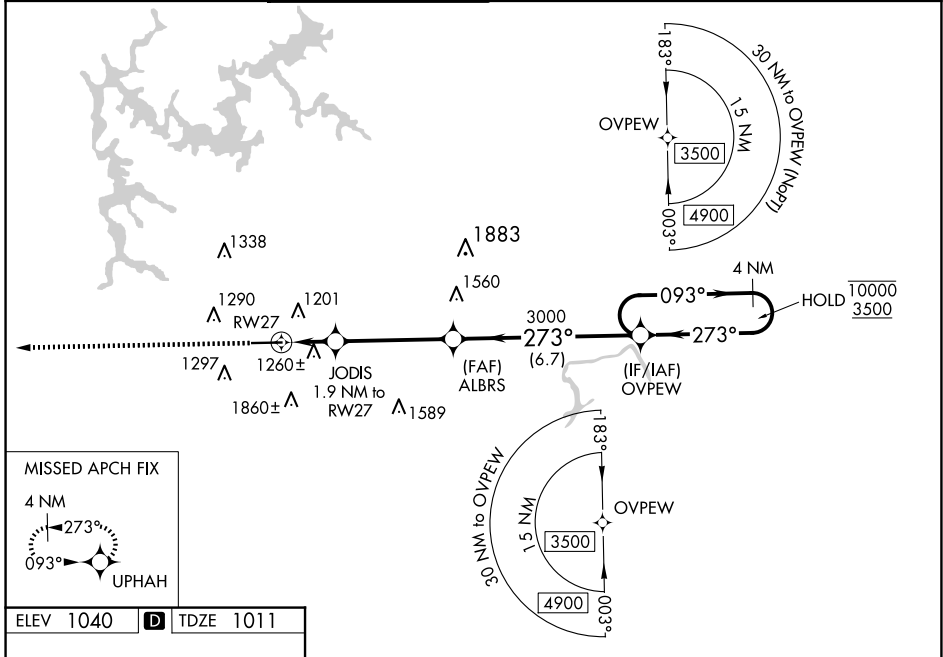


WAAS CH 97308 W27A	APP CRS 273°	Rwy Idg TDZE 1011 Apt Elev 1040	5374
--	------------------------	---	-------------

RNAV (GPS) RWY 27

COBB COUNTY INTL/MCCOLLUM FLD (RYY)

RNP APCH-GPS.				MALSF		MISSED APPROACH: Climb to 3500 direct UPHAH and hold.	
<p>⚠ Inop table does not apply to LPV. For uncompensated Baro-VNAV systems, LNAV/VNAV NA below -17°C or above 54°C. For inop ALS, increase LNAV/VNAV all Cats and LNAV Cats C and D visibility to 1½ SM. Circling Rwy 9 NA at night.</p>							
ATIS 128.125	ATLANTA APP CON 121.0 268.7	MCCOLLUM TOWER ★ 125.9 (CTAF) 0	GND CON 119.0	CLNC DEL 119.0	CLNC DEL 121.0 268.7 (When twr closed)	UNICOM 122.7	



ELEV 1040	D	TDZE 1011
HIRL Rwy 9-27 0		

3500		UPHAH	
4 NM Holding Pattern			
RWY 27		OVPEW	
1.9 NM to RWY 27		3000	
1660		3000	
1.9 NM		6.7 NM	
A		B	
LPV DA		1211-¾ 200 (200-¾)	
LNAV/VNAV DA		1520-1¼ 509 (500-1¼)	
LNAV MDA		1520-¾ 509 (500-¾) 1520-1¼ 509 (500-1¼)	
C CIRCLING		1800-1 760 (800-1) 2180-3 1140 (1200-3)	
GP 3.00° TCH 46			

SE-4, 20 FEB 2025 to 20 MAR 2025

SE-4, 20 FEB 2025 to 20 MAR 2025