

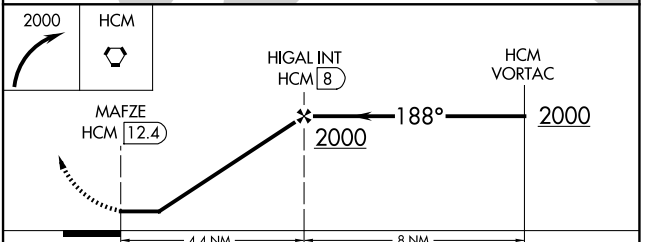
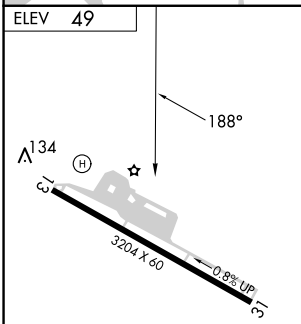
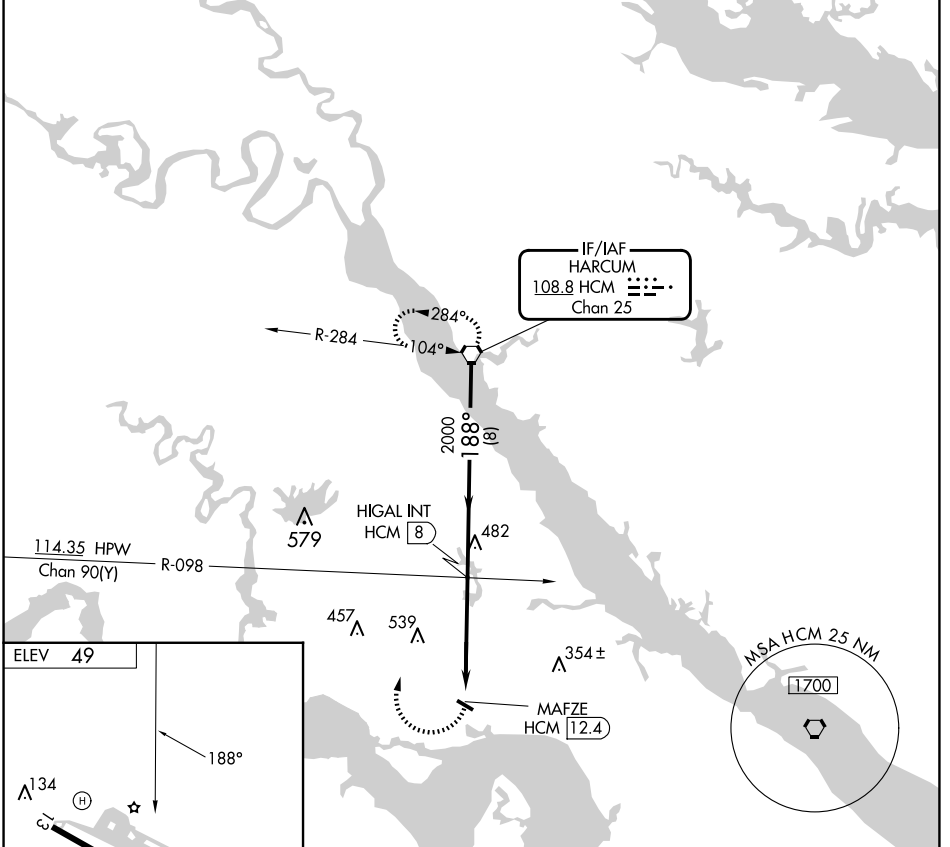
VORTAC HCM 108.8 Chan 25	APP CRS 188°	Rwy Idg TDZE Apt Elev N/A N/A 49
---------------------------------------	------------------------	--

VOR-B

WALTRIP WILLIAMSBURG EXEC AIRPORT (JGG)

▼ ▲	Procedure NA at night. Rwy 13, 31 helicopter visibility reduction below 1 SM NA.	MISSED APPROACH: Climbing right turn to 2000 direct HCM VORTAC and hold.
----------------------	---	--

AWOS-3 120.625	NORFOLK APP CON 119.45 360.6	GCO 135.075	UNICOM 122.8 (CTAF) 0
--------------------------	--	-----------------------	---------------------------------



REIL Rwy 13 and 31 0
MIRL Rwy 13-31 0

FAF to MAP	4.4 NM				
Knots	60	90	120	150	180
Min:Sec	4:24	2:56	2:12	1:46	1:28

CATEGORY	A	B	C	D
☑ CIRCLING	1060-3 1011 (1100-3)			NA

VOR-B

NE-3, 20 FEB 2025 to 20 MAR 2025

NE-3, 20 FEB 2025 to 20 MAR 2025