

| | | |
|-------------|----------|-------------|
| APP CRS | Rwy Idg | 2589 |
| 185° | TDZE | 584 |
| | Apt Elev | 584 |

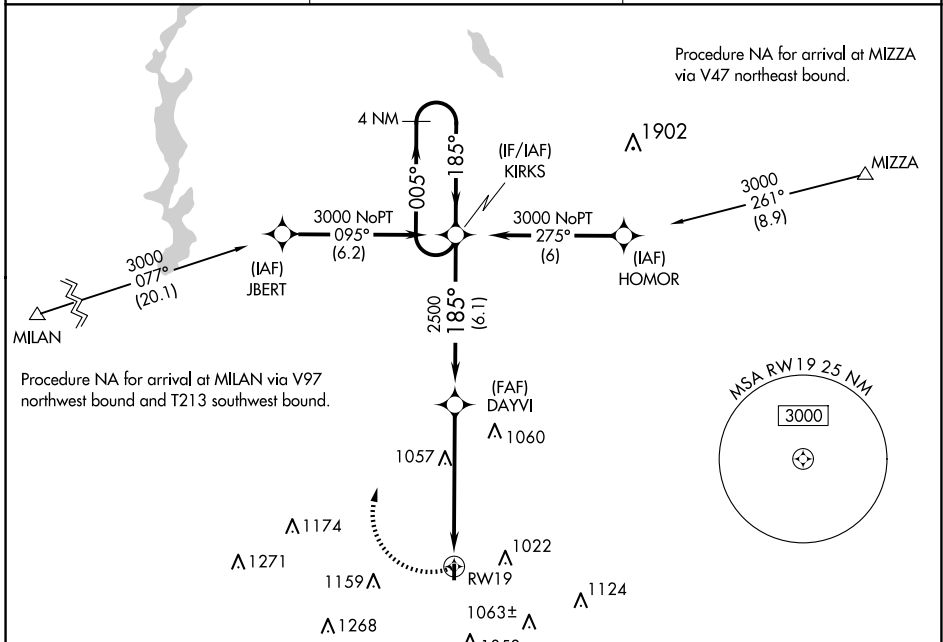
RNAV (GPS) RWY 19

CINCINNATI WEST (I67)

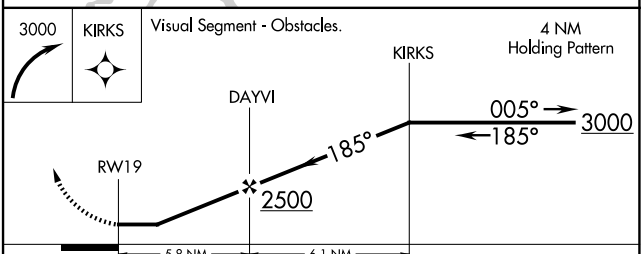
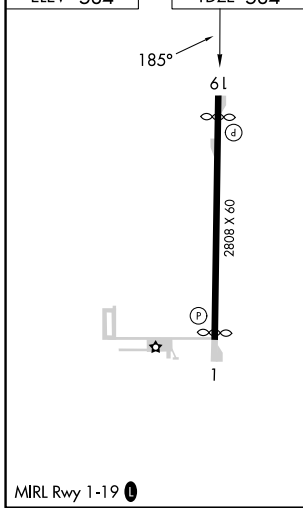
⚠ DME/DME RNP-0.3 NA. Rwy 1, 19 helicopter visibility reduction below 1 SM NA.
⚠ NA Use Butler Co Rgnl-Hogan Field altimeter setting, when not received, use Cincinnati/Northern Kentucky Intl altimeter setting and increase all MDA 40 feet. Procedure NA at night.

MISSED APPROACH:
 Climbing right turn 3000 direct KIRKS and hold.

| | | |
|---------------------------|---|-------------------------------|
| AWOS-3PT 118.15 | CINCINNATI APP CON 128.7 254.25 | UNICOM 123.0 (CTAF) |
|---------------------------|---|-------------------------------|



| | |
|----------|----------|
| ELEV 584 | TDZE 584 |
|----------|----------|



| CATEGORY | A | B | C | D |
|----------|-----------------------|-------------------------|----|---|
| LNAV MDA | 1380-1 796 (800-1) | 1380-1¼ 796 (800-1¼) | NA | |
| CIRCLING | 1380-1 796 (800-1) | 1380-1¼ 796 (800-1¼) | NA | |

EC-2, 20 FEB 2025 to 20 MAR 2025

EC-2, 20 FEB 2025 to 20 MAR 2025