

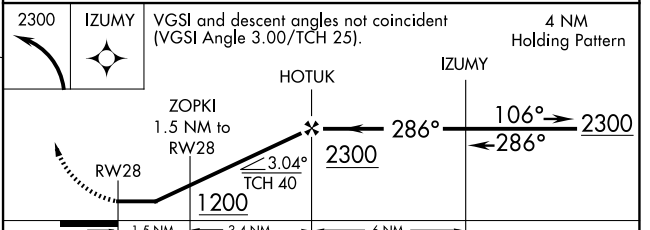
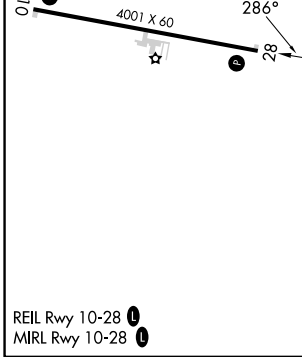
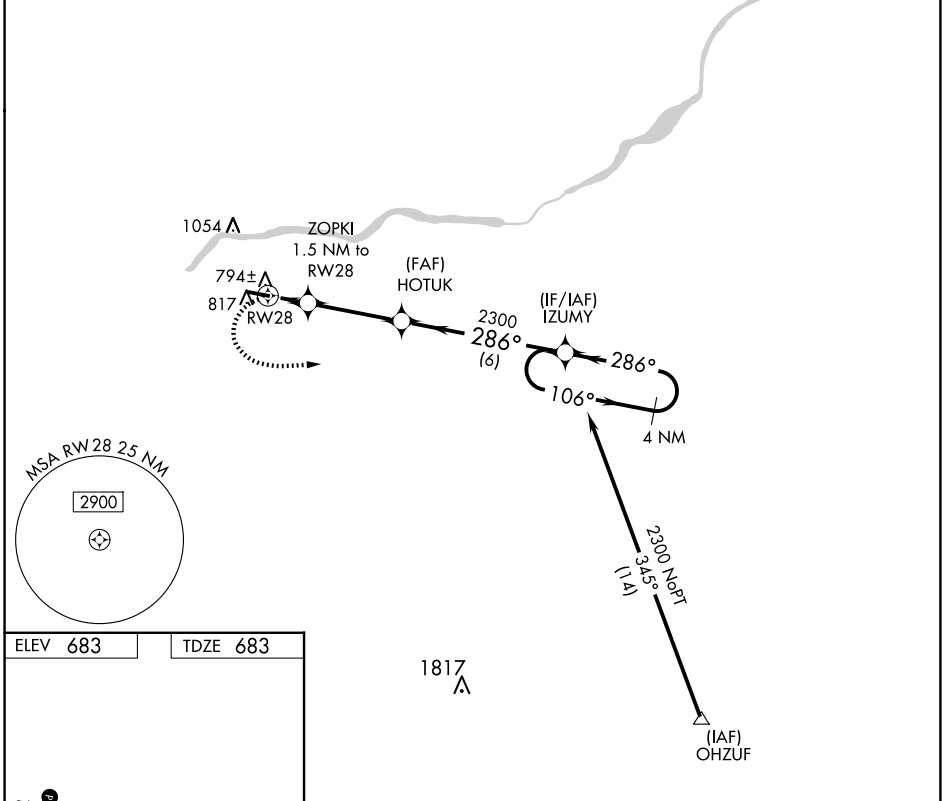
APP CRS 286°	Rwy Idg TDZE Apt Elev	4001 683 683
------------------------	-----------------------------	---

RNAV (GPS) RWY 28

HENRY COUNTY (7W5)

RNP APCH.	<p>▼ Rwy 28 helicopter visibility reduction below 3/4 SM NA. ▲ NA Circling Rwy 10 NA at night. Use Toledo Express altimeter setting. When not received, procedure NA.</p>	MISSED APPROACH: Climbing left turn to 2300 direct IZUMY and hold.
-----------	--	--

TOL ASOS 118.75 290.225	TOLEDO APP CON 134.35 307.0	UNICOM 123.0 (CTAF) 0
-----------------------------------	---------------------------------------	---------------------------------



CATEGORY	A	B	C	D
LNAV MDA	1100-1	417 (500-1)	1100-1 1/8 417 (500-1 1/8)	NA
C CIRCLING	1220-1	537 (600-1)	1400-2 717 (800-2)	NA

EC-2, 20 FEB 2025 to 20 MAR 2025

EC-2, 20 FEB 2025 to 20 MAR 2025