

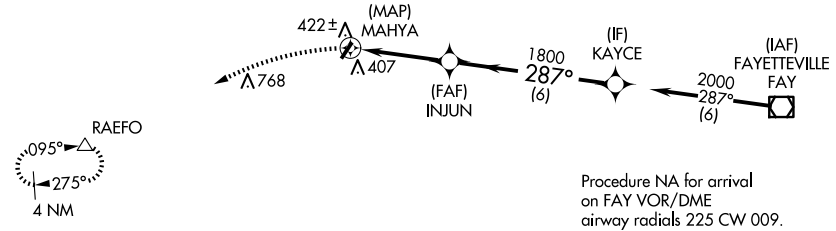
APP CRS	Rwy Idg	<b>N/A</b>
<b>287°</b>	TDZE	<b>N/A</b>
	Apt Elev	<b>304</b>

# RNAV (GPS)-A

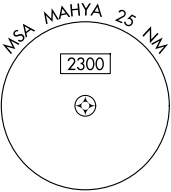
P K AIRPARK (5W4)

<p><b>▽</b> DME/DME RNP-0.3 NA.                  Procedure NA at night.                  Use Fayetteville altimeter setting.</p>	<p>MISSED APPROACH: Climbing left turn to 3000                  direct RAEFO and hold.</p>
<p>FAYETTEVILLE APP CON  <b>127.8 290.25</b></p>	<p>UNICOM  <b>123.0 (CTAF)</b></p>

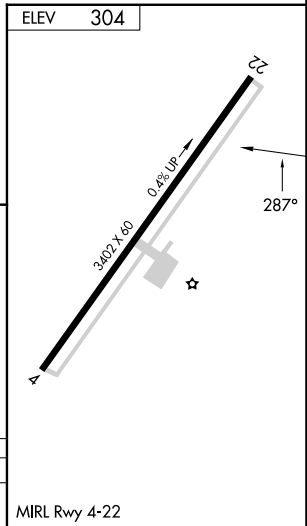
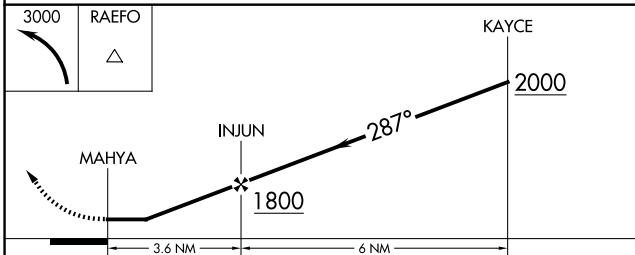
SE-2, 20 FEB 2025 to 20 MAR 2025



Procedure NA for arrival on FAY VOR/DME airway radials 225 CW 009.



1249 A



CATEGORY	A	B	C	D
<b>C</b> CIRCLING	840-1 536 (600-1)	860-1 556 (600-1)	920-1¾ 616 (700-1¾)	NA

SE-2, 20 FEB 2025 to 20 MAR 2025