

RAEFORD, NORTH CAROLINA

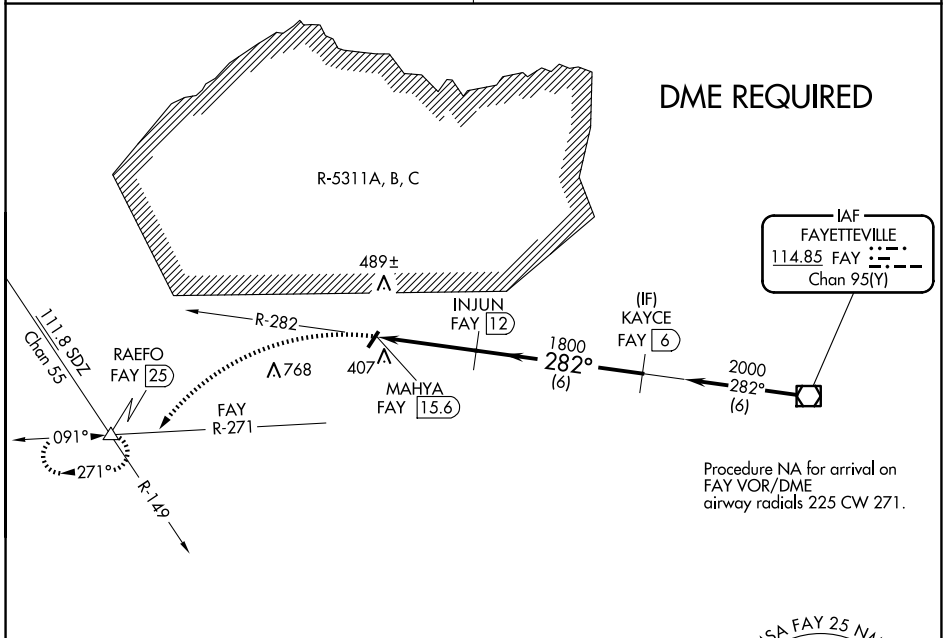
AL-6439 (FAA)

23110

VOR/DME FAY 114.85 Chan 95(Y)	APP CRS 282°	Rwy Idg TDZE Apt Elev N/A N/A 304
--	------------------------	---

VOR-A
P K AIRPARK (5W4)

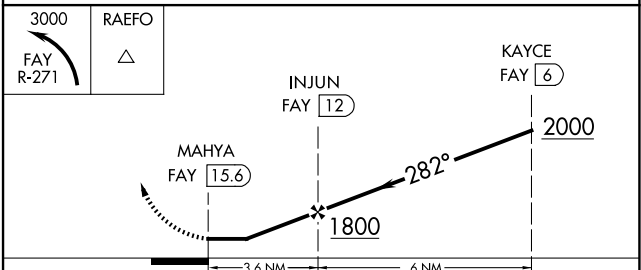
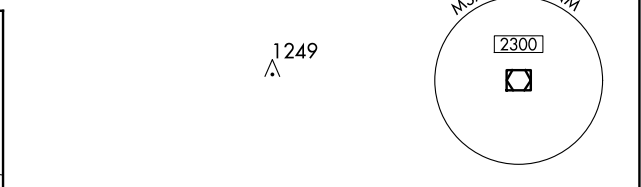
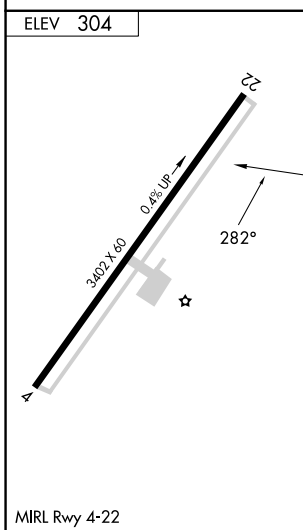
▽ △ NA	DME required. Procedure NA at night. Use Fayetteville altimeter setting.	MISSED APPROACH: Climbing left turn to 3000 on FAY VOR/DME R-271 to RAEFO/FAY 25 DME and hold.
FAYETTEVILLE APP CON 127.8 290.25		UNICOM 123.0 (CTAF)



Procedure NA for arrival on
FAY VOR/DME
airway radials 225 CW 271.

SE-2, 20 FEB 2025 to 20 MAR 2025

SE-2, 20 FEB 2025 to 20 MAR 2025



CATEGORY	A	B	C	D
☑ CIRCLING	840-1 536 (600-1)	860-1 556 (600-1)	920-1 ³ / ₄ 616 (700-1 ³ / ₄)	NA

RAEFORD, NORTH CAROLINA
Amdt 4 01FEB18

35°01'N-79°11'W

P K AIRPARK (5W4)
VOR-A