

APP CRS **160°**  
 Rwy Idg **5004**  
 TDZE **1023**  
 Apt Elev **1023**

**RNAV (GPS) RWY 16**  
 SEMINOLE MUNI (SRE)

RNP APCH

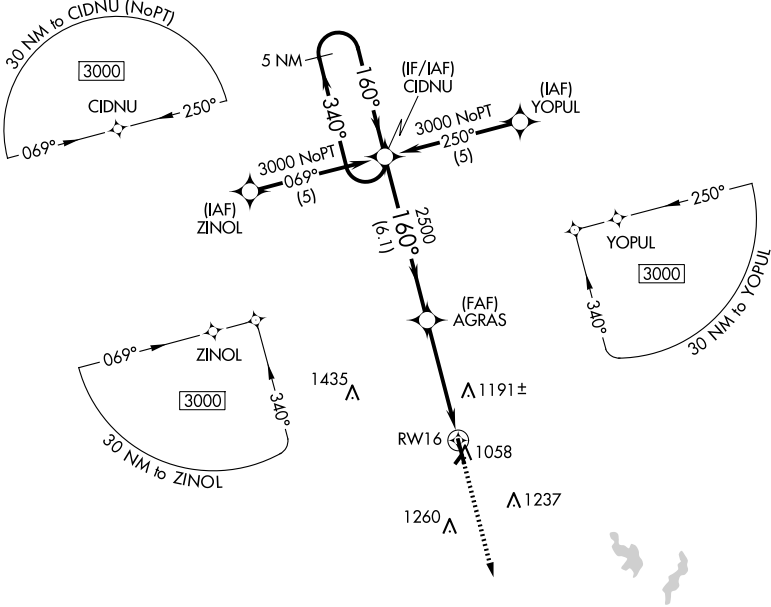
**⚠** Procedure NA at night. Circling NA to Rwy 5 and 23. Rwy 16 helicopter visibility reduction below 1 SM NA. When local altimeter setting not received, use Shawnee Rgnl altimeter setting and increase all MDAs 40 feet, and increase Circling Cat C visibility ¼ SM.

MISSED APPROACH: Climb to 3000 direct FANAD and hold.

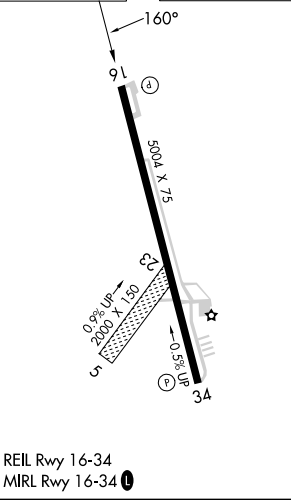
AWOS-3  
**118.625**

FORT WORTH CENTER  
**132.2 338.35**

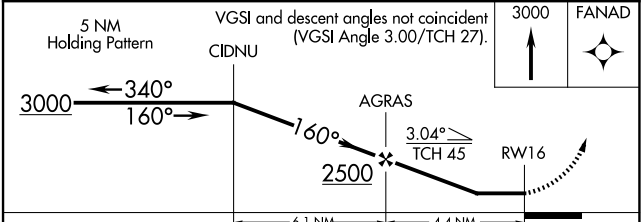
UNICOM  
**122.80**



ELEV 1023 | TDZE 1023



REIL Rwy 16-34  
 MIRL Rwy 16-34



CATEGORY	A	B	C	D
LNAV MDA	1500-1	477 (500-1)	1500-1¼ 477 (500-1¼)	NA
CIRCLING	1500-1 477 (500-1)	1560-1 537 (600-1)	1620-1½ 597 (600-1½)	NA

SC-1, 20 FEB 2025 to 20 MAR 2025

SC-1, 20 FEB 2025 to 20 MAR 2025