

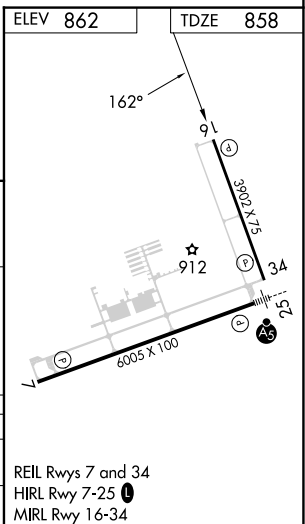
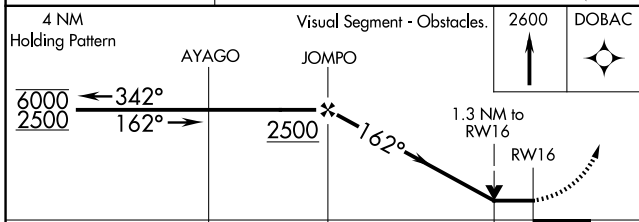
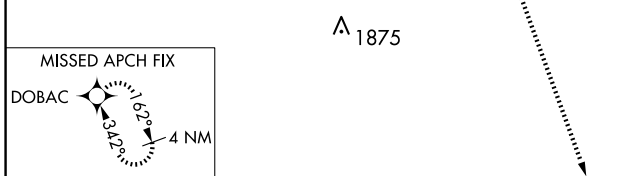
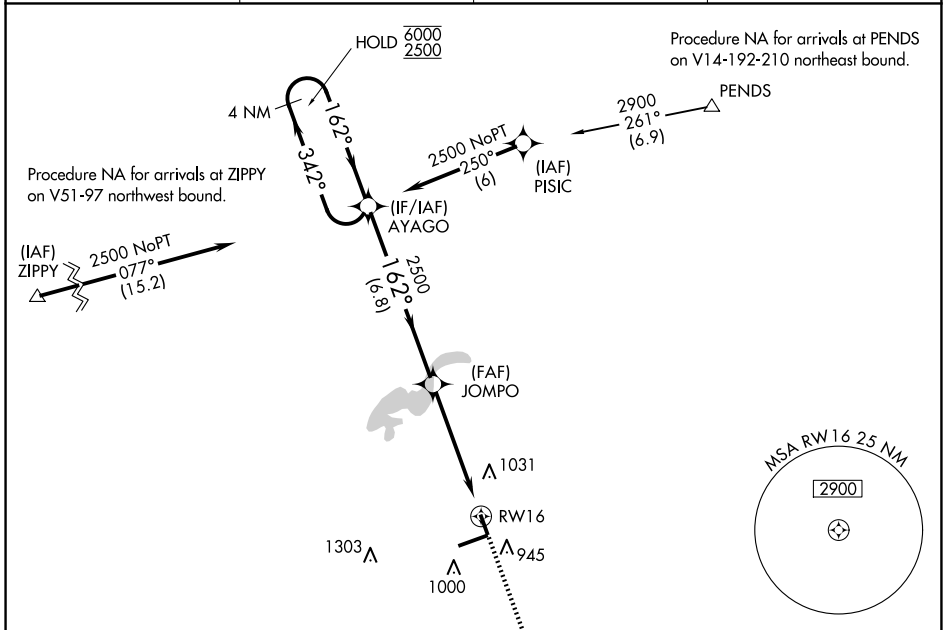
APP CRS	Rwy Idg	<b>3902</b>
<b>162°</b>	TDZE	<b>858</b>
	Apt Elev	<b>862</b>

# RNAV (GPS) RWY 16

INDIANAPOLIS RGNL (MQJ)

RNP APCH - GPS.		MISSED APPROACH: Climb to 2600 direct DOBAC and hold.	
<p><b>▽</b> Rwy 16 helicopter visibility reduction below 3/4 SM NA. VDP NA when using Indianapolis altimeter setting. When local altimeter setting not received, use Indianapolis altimeter setting: increase all MDAs 60 feet and LNAV visibility Cats C and D 1/8 SM; increase Circling visibility Cat D 1/4 SM.</p>			

AWOS-3PT <b>124.175</b>	INDIANAPOLIS APP CON <b>127.15 317.8</b>	CLNC DEL <b>119.25</b>	UNICOM <b>122.975 (CTAF)</b>
----------------------------	---	---------------------------	---------------------------------



CATEGORY	A	B	C	D
LNAV MDA	1320-1	462 (500-1)	1320-1 <sup>3</sup> / <sub>8</sub>	462 (500-1 <sup>3</sup> / <sub>8</sub> )
<b>C</b> CIRCLING	1340-1	478 (500-1)	1360-1 <sup>1</sup> / <sub>2</sub>	1660-2 <sup>1</sup> / <sub>2</sub>
			498 (500-1 <sup>1</sup> / <sub>2</sub> )	798 (800-2 <sup>1</sup> / <sub>2</sub> )

REIL Rwys 7 and 34  
HIRL Rwy 7-25  
MIRL Rwy 16-34

EC-2, 20 FEB 2025 to 20 MAR 2025

EC-2, 20 FEB 2025 to 20 MAR 2025