

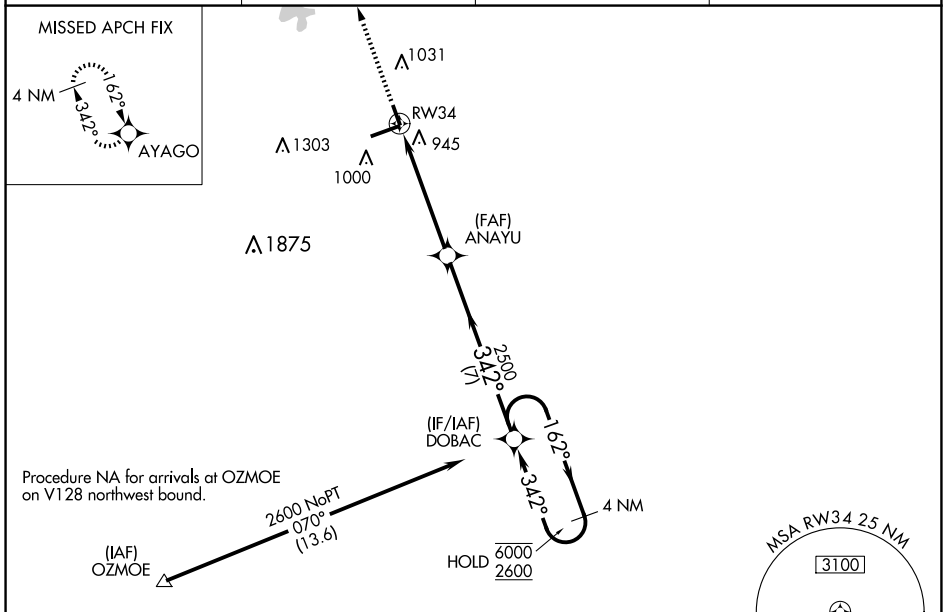
WAAS CH <b>45634</b> <b>W34A</b>	APP CRS <b>342°</b>	Rwy Idg TDZE Apt Elev	<b>3902</b> <b>858</b> <b>862</b>
--	------------------------	-----------------------------	---

# RNAV (GPS) RWY 34

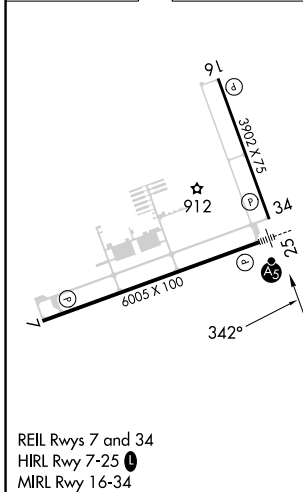
INDIANAPOLIS RGNL (MQJ)

RNP APCH.	MISSED APPROACH: Climb to 2500 direct AYAGO and hold.
⚠ NA For uncompensated Baro-VNAV systems, LNAV/VNAV NA below -16°C (4°F) or above 54°C (130°F).	

AWOS-3PT <b>124.175</b>	INDIANAPOLIS APP CON <b>127.15 317.8</b>	CLNC DEL <b>119.25</b>	UNICOM <b>122.975</b> (CTAF) <b>📻</b>
----------------------------	---	---------------------------	--



ELEV 862	TDZE 858
----------	----------



2500	AYAGO	VGSI and RNAV glidepath not coincident (VGSI Angle 3.00/TCH 49).	4 NM Holding Pattern	
		ANAYU	DOBAC	
* LNAV only.	* 1.3 NM to RW34	2500	6000 2600	
		342°	162°	
		342°	342°	
		2500	GP 3.00° TCH 33	
	1.3 NM	3.8 NM	7 NM	
CATEGORY	A	B	C	D
LPV DA	DA	1058- <sup>3</sup> / <sub>4</sub>	200 (200- <sup>3</sup> / <sub>4</sub> )	
LNAV/VNAV DA	DA	1119- <sup>7</sup> / <sub>8</sub>	261 (300- <sup>7</sup> / <sub>8</sub> )	
LNAV MDA	1320-1	462 (500-1)	1320-1 <sup>3</sup> / <sub>8</sub>	462 (500-1 <sup>3</sup> / <sub>8</sub> )
<b>📻</b> CIRCLING	1340-1	478 (500-1)	1360-1 <sup>1</sup> / <sub>2</sub> 498 (500-1 <sup>1</sup> / <sub>2</sub> )	1660-2 <sup>1</sup> / <sub>2</sub> 798 (800-2 <sup>1</sup> / <sub>2</sub> )

EC-2, 20 FEB 2025 to 20 MAR 2025

EC-2, 20 FEB 2025 to 20 MAR 2025