

| | | | |
|--|------------------------|-----------------------------|---|
| WAAS CH 69646 W07A | APP CRS 072° | Rwy Idg TDZE Apt Elev | 6005 862 862 |
|--|------------------------|-----------------------------|---|

RNAV (GPS) RWY 7

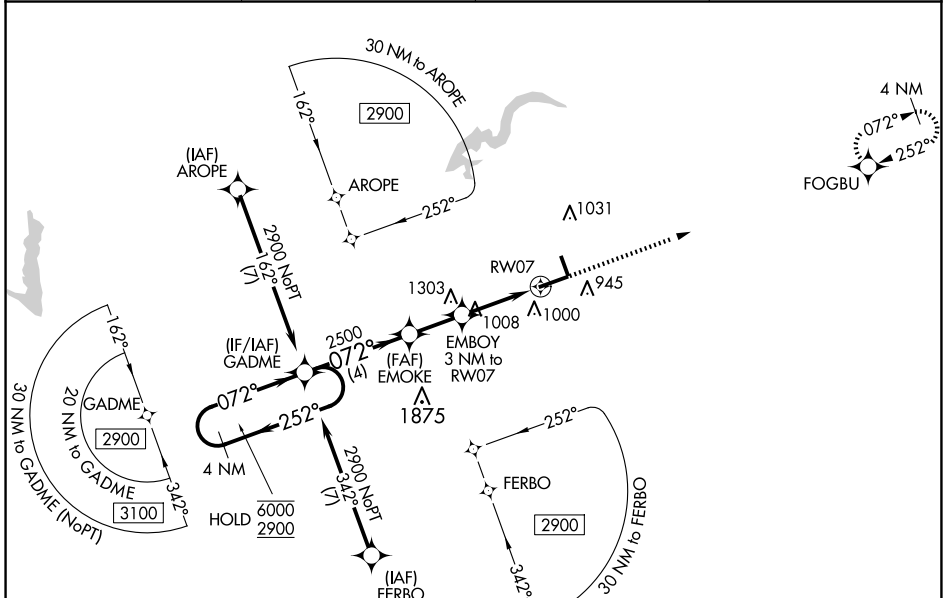
INDIANAPOLIS RGNL (MQJ)

RNP APCH - GPS.

▼ For uncompensated Baro-VNAV systems, LNAV/VNAV NA below -16°C or above 54°C.
 ▲ Rwy 7 helicopter visibility reduction below 3/4 SM NA. Baro-VNAV and VDP NA when using IND altimeter setting. When local altimeter setting not received, use IND altimeter setting and increase LPV DA to 1271 feet and all visibilities 1/8 SM; increase LNAV/VNAV DA to 1194 feet and all visibilities 1/8 SM; increase all MDAs 60 feet and LNAV visibility Cat C and D 1/4 SM.

MISSED APPROACH: Climb to 2700 direct FOGBU and hold.

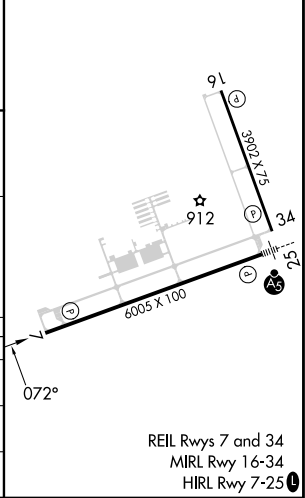
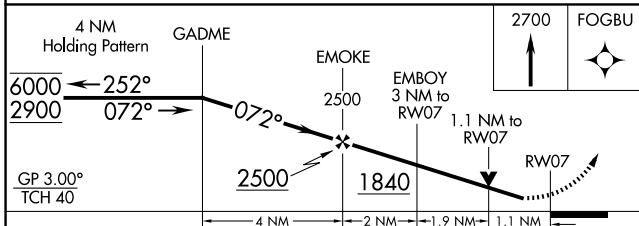
| | | | |
|----------------------------|---|---------------------------|--|
| AWOS-3PT 124.175 | INDIANAPOLIS APP CON 127.15 317.8 | CINC DEL 119.25 | UNICOM 122.975 (CTAF) U |
|----------------------------|---|---------------------------|--|



EC-2, 20 FEB 2025 to 20 MAR 2025

EC-2, 20 FEB 2025 to 20 MAR 2025

| | |
|----------|----------|
| ELEV 862 | TDZE 862 |
|----------|----------|



| CATEGORY | A | B | C | D |
|--------------|--------|-------------|---------------|-----------------|
| LPV DA | | 1216-1 | 354 (400-1) | |
| LNAV/VNAV DA | | 1139-7/8 | 277 (300-7/8) | |
| LNAV MDA | 1260-1 | 398 (400-1) | 1260-1 1/8 | 398 (400-1 1/8) |