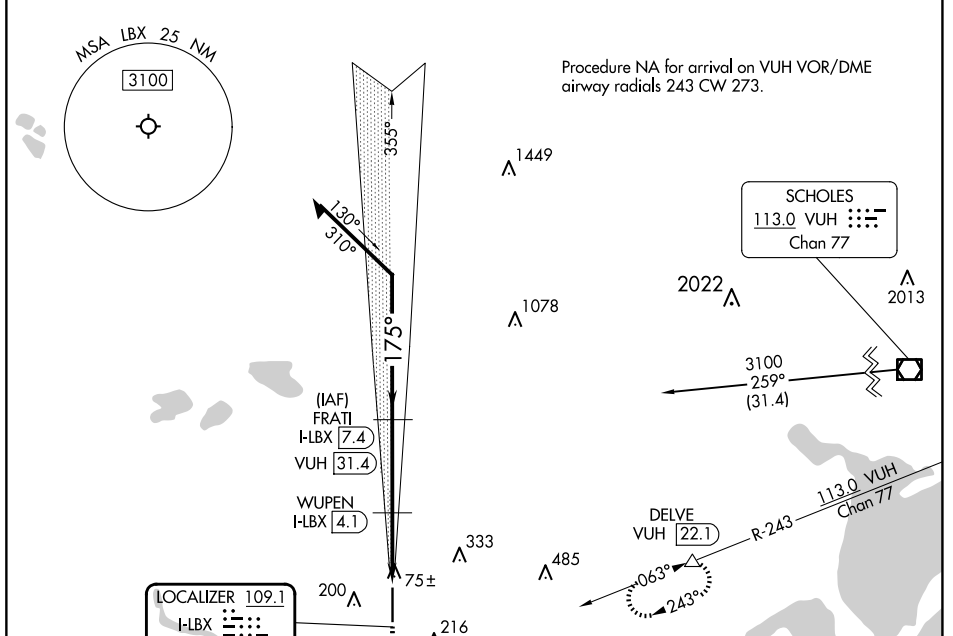


LOC/DME I-LBX 109.1 Chan 28	APP CRS 175°	Rwy Idg 7000 TDZE 25 Apt Elev 25
---	------------------------	---

ILS or LOC RWY 17

TEXAS GULF COAST RGNL (L.B.X)

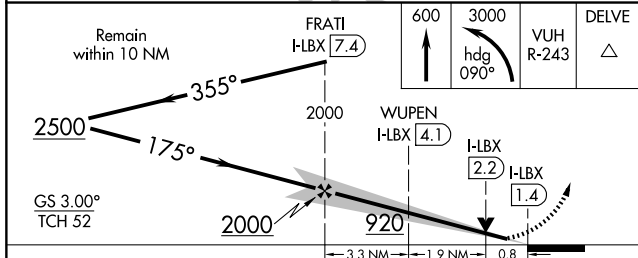
DME required.		MALSRL	MISSED APPROACH: Climb to 600 then climbing left turn to 3000 on heading 090° and VUH VOR/DME R-243 to DELVE/VUH 22.1 DME and hold, continue climb-in-hold to 3000.
For inop ALS, increase S-LOC 17 Cat C/D visibility to ½ SM. Circling NA east of Rwy 17-35.			
ASOS 119.925	HOUSTON APP CON 134.45 284.0	CLNC DEL 125.2	UNICOM 123.0 (CTAF) 0



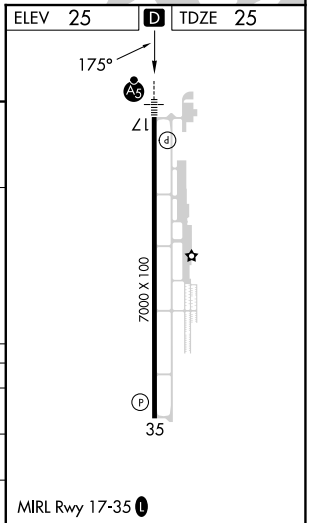
ELEV 25	D	TDZE 25
---------	----------	---------

175°
600
3000
VUH R-243
DELVE
I-LBX 7.4
WUPEN I-LBX 4.1
I-LBX 2.2
I-LBX 1.4

7000 X 100
35



CATEGORY	A	B	C	D
S-ILS 17		225-½	200 (200-½)	
S-LOC 17		340-½	315 (400-½)	
C CIRCLING	500-1	475 (500-1)	500-1½ 475 (500-1½)	620-2 595 (600-2)



SC-5, 20 FEB 2025 to 20 MAR 2025

SC-5, 20 FEB 2025 to 20 MAR 2025