

WAAS CH 50500 W25A	APP CRS 246°	Rwy Idg TDZE 10 Apt Elev 11	4463
----------------------------------------	------------------------	-------------------------------------------------	-------------

RNAV (GPS) RWY 25

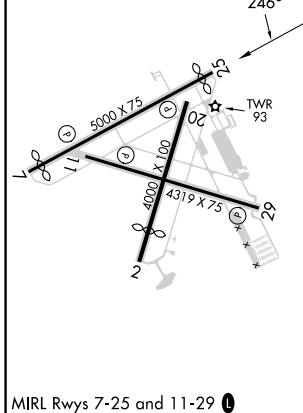
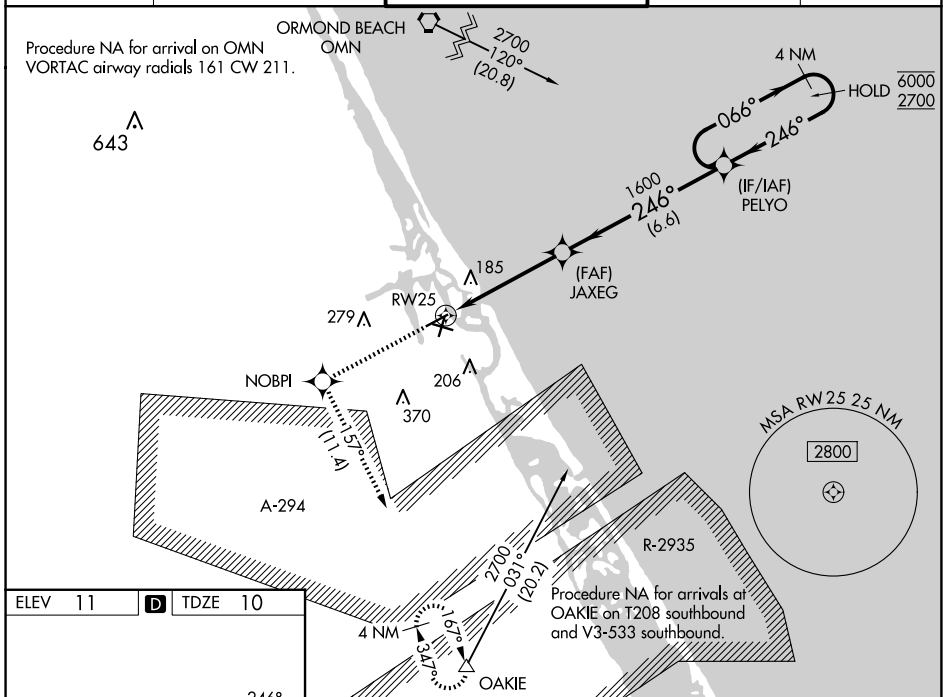
NEW SMYRNA BEACH MUNI (EVB)

RNP APCH-GPS.

▼ Rwy 25 helicopter visibility reduction below 1 SM NA. Straight-in Rwy 25 NA at night, Circling Rwy 7, 11, 25 NA at night. When local altimeter setting not received, use Daytona Beach altimeter setting increase LPV DA to 328 feet and all MDA 40 feet. Increase LNAV Cat C visibility 1/8 SM and Circling Cat C visibility 1/4 SM.

MISSED APPROACH: Climb to 4000 direct NOBPI and on track 157° to OAKIE and hold, continue climb-in-hold to 4000.

ATIS 124.625	DAYTONA APP CON 125.35 322.3	NEW SMYRNA BEACH TOWER* 119.675 (CTAF) 0	GND CON 121.325	UNICOM 122.95
------------------------	----------------------------------------	----------------------------------------------------	---------------------------	-------------------------



4000	NOBPI	tr 157°	OAKIE	VGSI and RNAV glidepath not coincident (VGSI Angle 3.00/TCH 46).	4 NM
				PELYO	Holding Pattern
			JAXEG 1600		
			RWY 25		
			4.7 NM	6.6 NM	
CATEGORY	A	B	C	D	
LPV DA	303-1 293 (300-1)			NA	
LNAV MDA	440-1	430 (500-1)	440-1 1/4 430 (500-1 1/4)	NA	
CIRCLING	440-1 429 (500-1)	520-1 509 (600-1)	680-1 3/4 669 (700-1 3/4)	NA	

SE-3, 20 FEB 2025 to 20 MAR 2025

SE-3, 20 FEB 2025 to 20 MAR 2025