

EDNA, TEXAS

AL-6468 (FAA)

24305

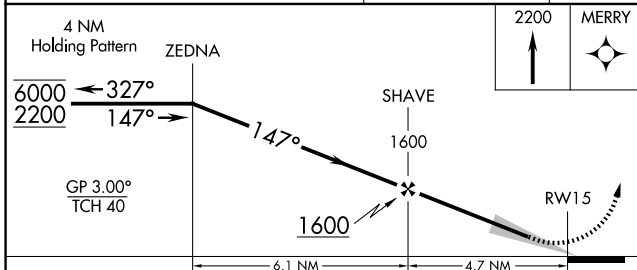
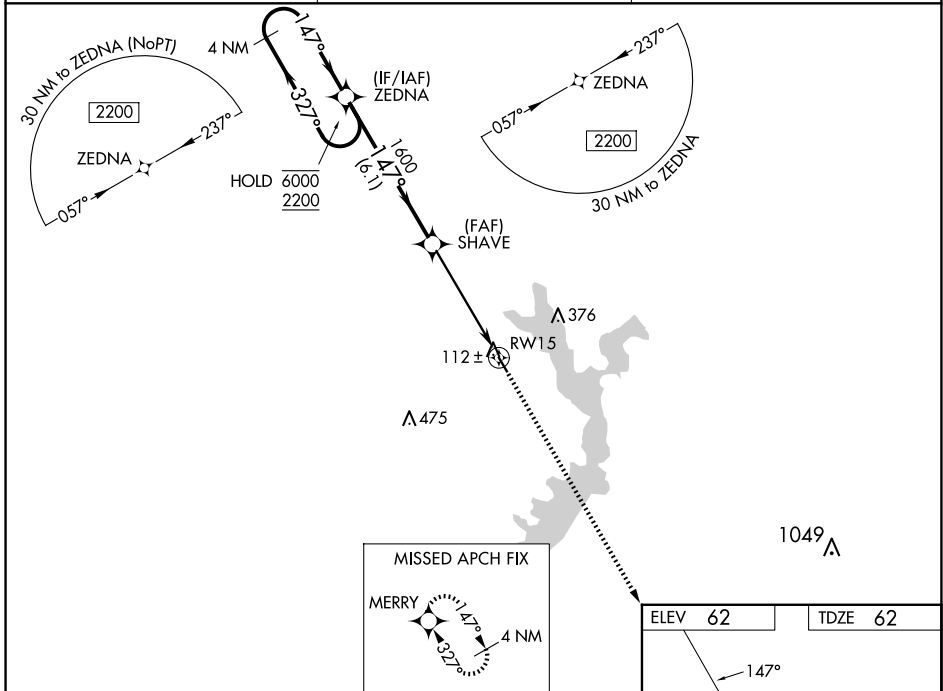
WAAS CH 50148 W15A	APP CRS 147°	Rwy Idg TDZE Apt Elev	3393 62 62
--	------------------------	-----------------------------	---------------------------------------

RNAV (GPS) RWY 15

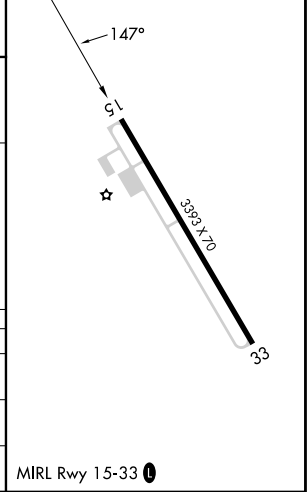
JACKSON COUNTY (26R)

RNP APCH - GPS.		MISSED APPROACH: Climb to 2200 direct MERRY and hold.
▼ ▲ NA	Baro-VNAV NA. Use VCT altimeter setting, when not received, use PKV altimeter setting.	

VCT ASOS 119.025	HOUSTON CENTER 135.05 353.6	UNICOM 122.8 (CTAF) 0
----------------------------	---------------------------------------	---------------------------------



ELEV 62	TDZE 62
---------	---------



CATEGORY	A	B	C	D
LPV DA	366-7/8	304 (400-7/8)		NA
LNAV/VNAV DA	366-7/8	304 (400-7/8)		NA
LNAV MDA	600-1	538 (600-1)		NA

MIRL Rwy 15-33 0

EDNA, TEXAS
Orig 31OCT24

29°00'N-96°35'W

JACKSON COUNTY (26R)

RNAV (GPS) RWY 15

SC-5, 20 FEB 2025 to 20 MAR 2025

SC-5, 20 FEB 2025 to 20 MAR 2025