

WAAS CH 97348 W33A	APP CRS 327°	Rwy Idg TDZE Apt Elev	3393 61 62
--	------------------------	-----------------------------	---------------------------------------

RNAV (GPS) RWY 33

JACKSON COUNTY (26R)

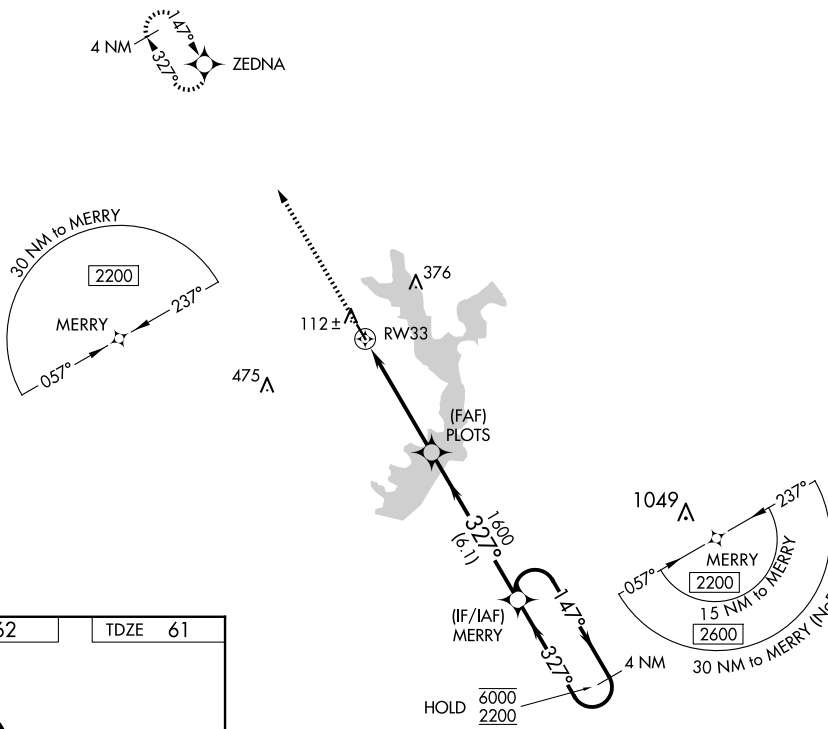
RNP APCH - GPS.
 ▼ Baro-VNAV NA.
 ▲ NA Use VCT altimeter setting, when not received, use PKV altimeter setting.

MISSED APPROACH: Climb to 2200 direct ZEDNA and hold.

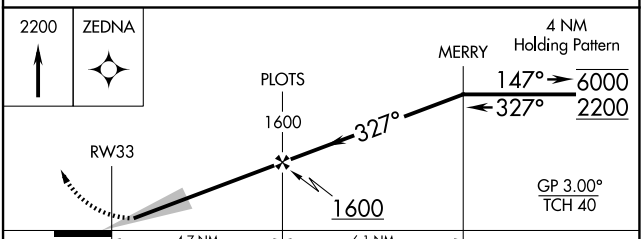
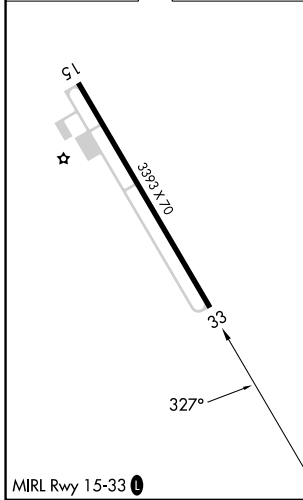
VCT ASOS
119.025

HOUSTON CENTER
135.05 353.6

UNICOM
122.8 (CTAF) 0



ELEV 62	TDZE 61
---------	---------



CATEGORY	A	B	C	D
LPV DA	315-3/4	254 (300-3/4)		NA
LNAV/VNAV DA	365-7/8	304 (400-7/8)		NA
LNAV MDA	560-1	499 (500-1)		NA

SC-5, 20 FEB 2025 to 20 MAR 2025

SC-5, 20 FEB 2025 to 20 MAR 2025