

APP CRS 226°	Rwy Idg 4797
	TDZE 1023
	Apt Elev 1029

RNAV (GPS) RWY 22

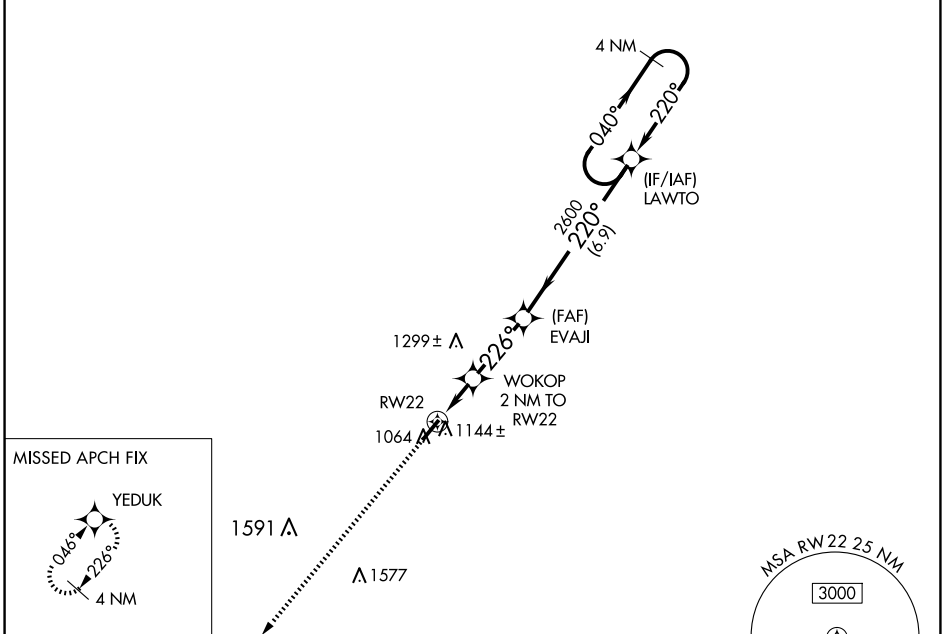
HARDIN COUNTY (I95)

RNP APCH - GPS.

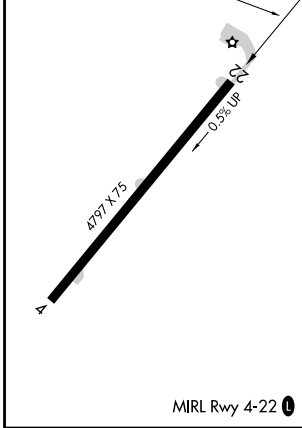
NA Rwy 22 helicopter visibility reduction below 1 SM NA. Procedure NA at night. Circling NA for Cat D NW of Rwy 04-22. When local altimeter setting not received, use Lima altimeter setting and increase all MDAs 60 feet and LNAV visibility Cat C ¼ SM and Circling visibility Cat C ¼ SM.

MISSED APPROACH: Climb to 3000 direct YEDUK and hold.

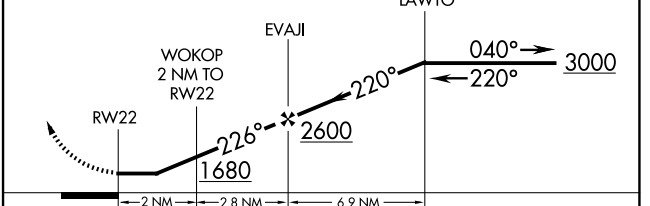
AWOS-3 126.4	AOH ASOS 128.725	COLUMBUS APP CON 134.45 323.15	UNICOM 122.8 (CTAF) 0 *
------------------------	----------------------------	--	-----------------------------------



ELEV 1029	TDZE 1023
-----------	-----------



3000	YEDUK	Visual Segment - Obstacles.	4 NM Holding Pattern
------	-------	-----------------------------	----------------------



CATEGORY	A	B	C	D
LNAV MDA	1460-1	437 (500-1)	1460-1¼ 437 (500-1¼)	1460-1½ 437 (500-1½)
CIRCLING	1580-1 551 (600-1)	1620-1 591 (600-1)	1620-1½ 591 (600-1½)	1620-2 591 (600-2)

EC-2, 20 FEB 2025 to 20 MAR 2025

EC-2, 20 FEB 2025 to 20 MAR 2025