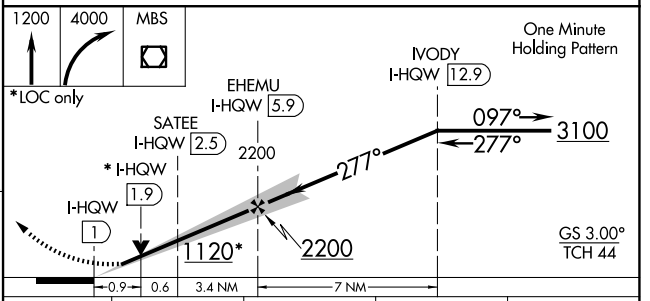
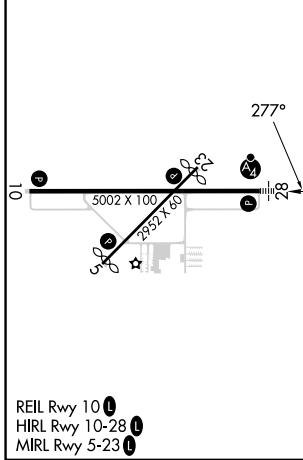
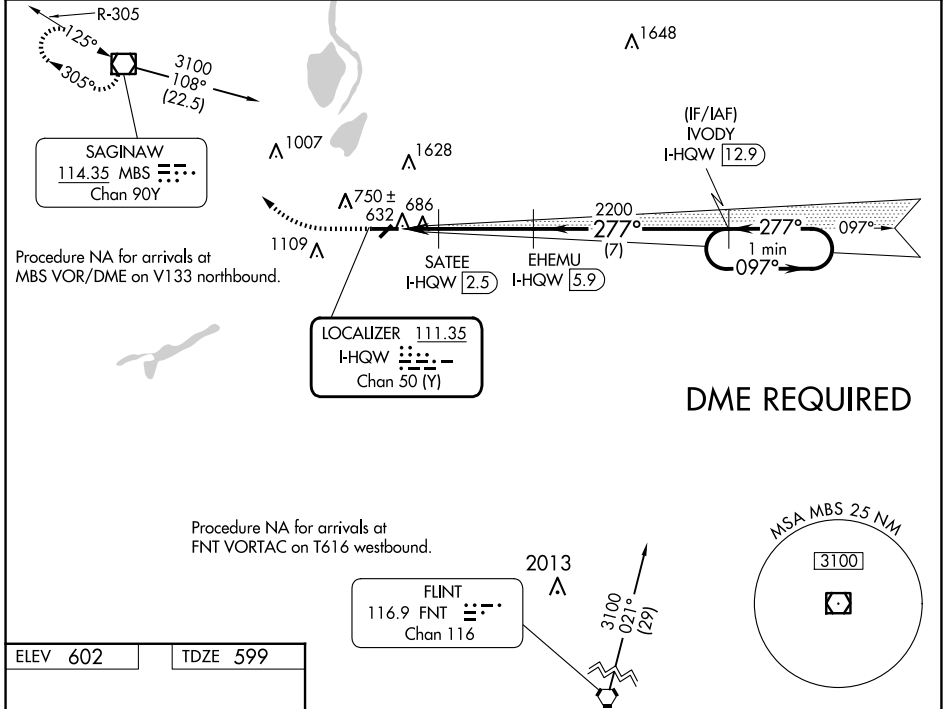


LOC/DME I-HQW 111.35 Chan 50 (Y)	APP CRS 277°	Rwy Idg TDZE Apt Elev	5002 599 602
--	------------------------	-----------------------------	---

ILS or LOC RWY 28
SAGINAW COUNTY/H W BROWNE (HYX)

<p>NA Inoperative table does not apply to S-ILS 28. DME required. Circling Rwy 5, 23 NA at night. Circling NA for Cat C north of Rwy 10-28.</p>	<p>MALSF </p>	<p>MISSED APPROACH: Climb to 1200 then climbing right turn to 4000 direct MBS VOR/DME and hold, continue climb-in-hold to 4000.</p>
<p>AWOS-3PT 118.325</p>	<p>GREAT LAKES APP CON ★ 120.95 235.625</p>	<p>UNICOM 122.8 (CTAF) 0</p>



CATEGORY	A	B	C	D
S-ILS 28		802- ³ / ₄ 203 (200- ³ / ₄)		NA
S-LOC 28		940- ³ / ₄ 341 (400- ³ / ₄)		NA
CIRCLING	1100-1	498 (500-1)	1460-2 ¹ / ₂ 858 (900-2 ¹ / ₂)	NA

EC-1, 20 FEB 2025 to 20 MAR 2025

EC-1, 20 FEB 2025 to 20 MAR 2025