

VOR/DME MBS 114.35 Chan 90Y	APP CRS 125°	Rwy Idg TDZE Apt Elev	N/A N/A 602
-------------------------------------------------	------------------------	-----------------------------	----------------------------------------

VOR/DME-A

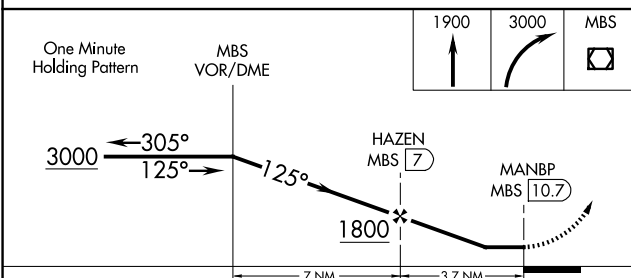
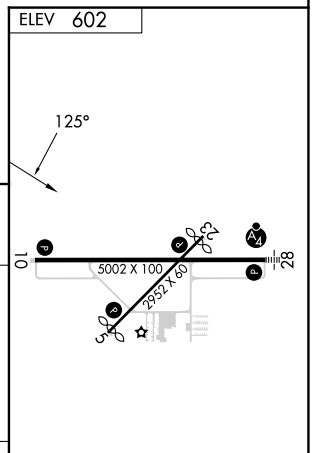
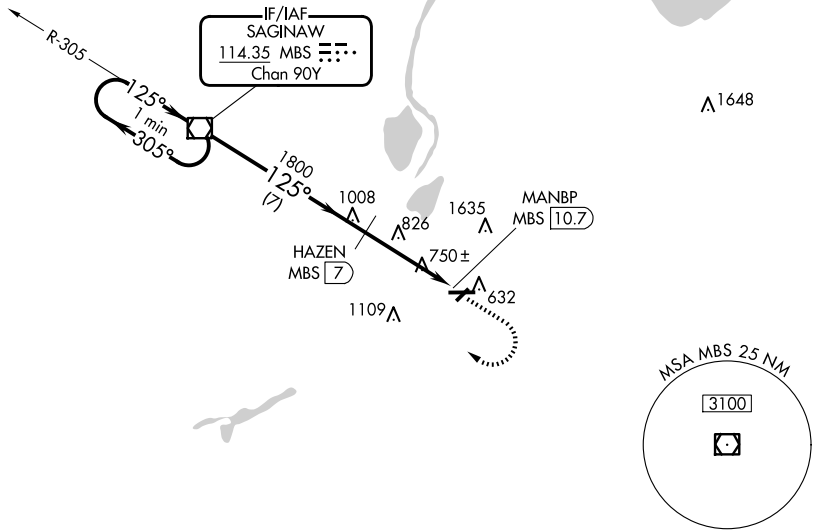
SAGINAW COUNTY/H W BROWNE (HYX)

⚠ Circling to Rwy 5/23 NA at night. When local altimeter setting not received, use Saginaw MBS Intl altimeter setting and increase all MDA 40 feet and increase Circling Cat C visibility ¼ SM. Circling NA for Cat C north of Rwy 10-28.

⚠ MISSED APPROACH: Climb to 1900 then climbing right turn to 3000 direct MBS VOR/DME and hold.

AWOS-3PT 118,325	GREAT LAKES APP CON ★ 120,95 235,625	UNICOM 122.8 (CTAF) 0
----------------------------	------------------------------------------------	---------------------------------

NoPT for arrival on MBS VOR/DME
airway radials 212 CW 016.



CATEGORY	A	B	C	D	REIL Rwy 10 0 HIRL Rwy 10-28 0 MIRL Rwy 5-23 0
C CIRCLING	1160-1	558 (600-1)	1460-2½ 858 (900-2½)	NA	

VOR/DME-A

EC-1, 20 FEB 2025 to 20 MAR 2025

EC-1, 20 FEB 2025 to 20 MAR 2025