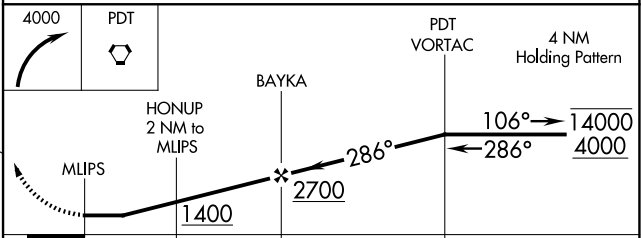
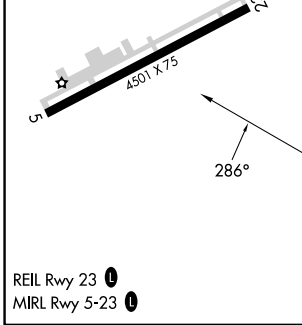
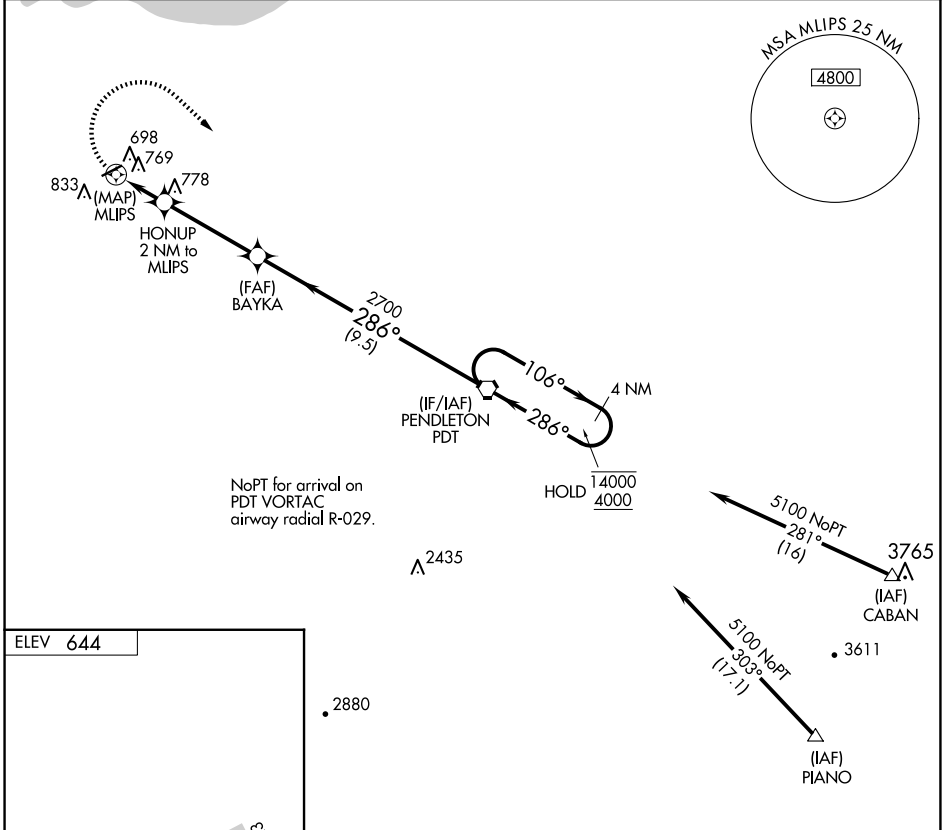


# RNAV (GPS)-B HERMISTON MUNI (H.R.I)

APP CRS <b>286°</b>	Rwy Idg TDZE Apt Elev	<b>N/A</b> <b>N/A</b> <b>644</b>
------------------------	-----------------------------	--

RNP APCH.	MISSED APPROACH: Climbing right turn to 4000 direct PDT VORTAC and hold.
Circling Rwy 5 NA at night.	

ASOS <b>135.225</b>	SPOKANE APP CON * <b>133.15 379.15</b>	UNICOM <b>122.8 (CTAF) 0</b>
------------------------	---	---------------------------------



REIL Rwy 23   
MIRL Rwy 5-23

CATEGORY	A	B	C	D
CIRCLING	1140-1	496 (500-1)	1140-1½ 496 (500-1½)	1260-2 616 (700-2)

NW-1, 20 FEB 2025 to 20 MAR 2025

NW-1, 20 FEB 2025 to 20 MAR 2025