

WAAS CH 53629 W01A	APP CRS 009°	Rwy Idg TDZE Apt Elev	4406 889 898
--	------------------------	-----------------------------	---

RNAV (GPS) RWY 1

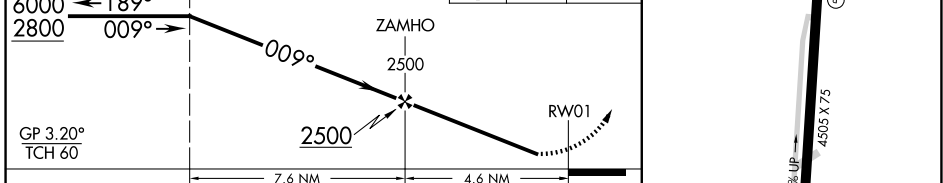
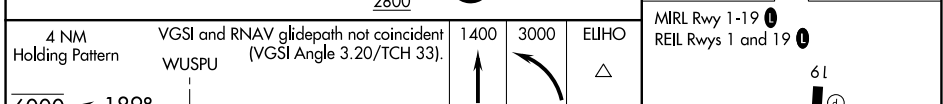
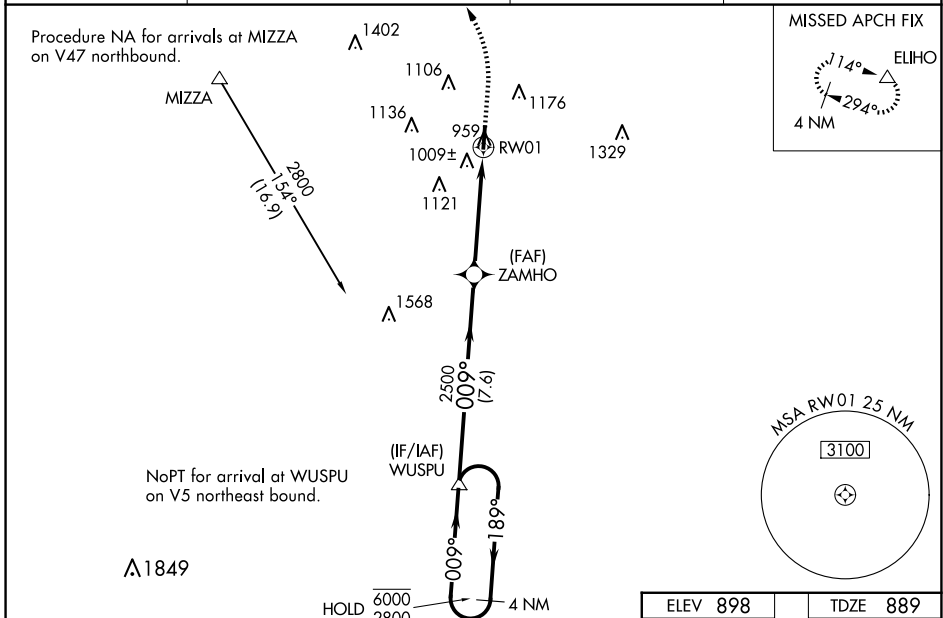
WARREN COUNTY/JOHN LANE FLD (I68)

RNP APCH - GPS.

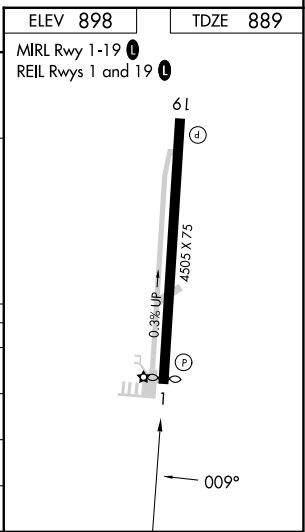
⚠ For uncompensated Baro-VNAV systems, LNAV/VNAV NA below -16°C or above 54°C. Baro-VNAV NA when using MGY altimeter setting. When local altimeter setting not received use MGY altimeter setting and increase LPV DA to 1179 feet and LNAV/VNAV DA to 1288 and all visibilities ½ SM. Increase all MDA 40 feet; increase LNAV Cat C/D visibility ½ SM and Circling Cat C visibility ¼ SM. When Circling to Rwy 19 at night, operational VGSI required, remain on or above VGSI glidepath until threshold. Rwy 1 helicopter visibility reduction below ¾ SM NA.

MISSED APPROACH: Climb to 1400 then climbing left turn to 3000 direct ELIHO and hold.

AWOS-3PT 120.55	COLUMBUS APP CON 118.85 269.275	CLNC DEL 119.4	UNICOM 123.075 (CTAF)
---------------------------	---	--------------------------	---------------------------------



CATEGORY	A	B	C	D
LPV DA	1153-1 264 (300-1)			NA
LNAV/VNAV DA	1262-1 373 (400-1)			NA
LNAV MDA	1260-1 371 (400-1)			
C CIRCLING	1400-1 502 (600-1)	1480-1 582 (600-1)	1480-1½ 582 (600-1½)	1500-2 602 (700-2)



EC-2, 20 FEB 2025 to 20 MAR 2025

EC-2, 20 FEB 2025 to 20 MAR 2025