

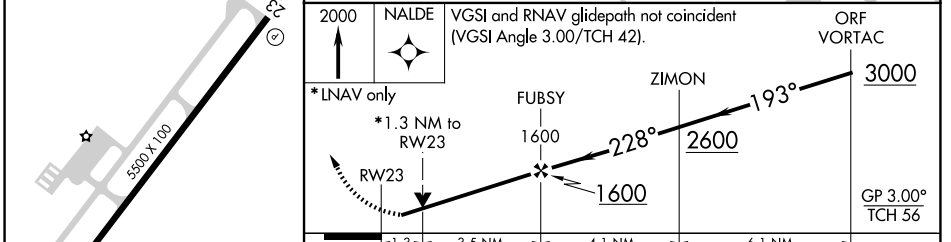
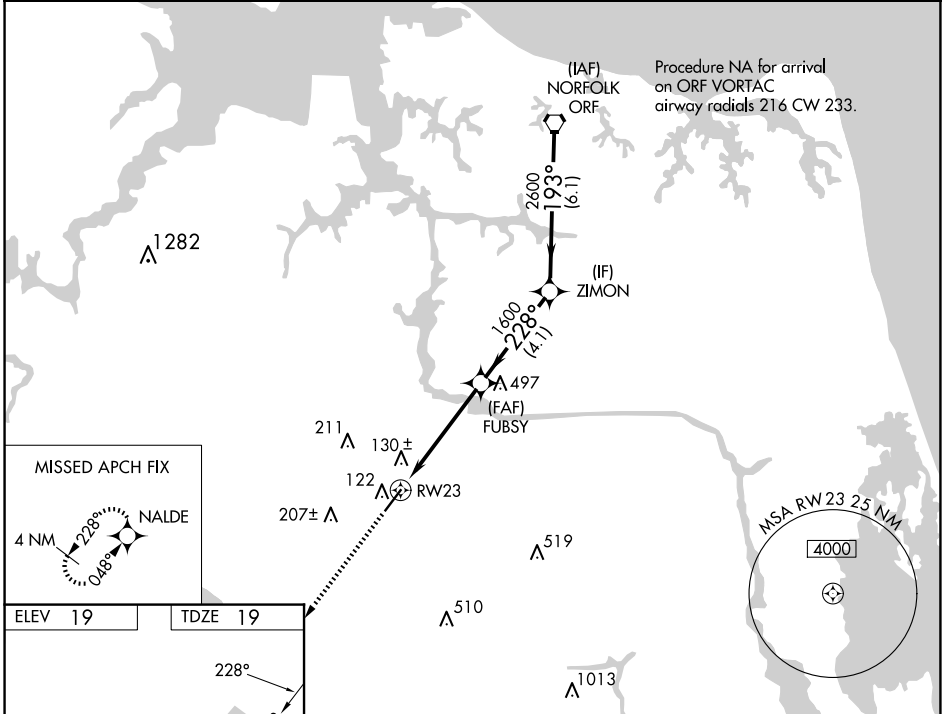
WAAS CH 65922 W23A	APP CRS 228°	Rwy Idg TDZE Apt Elev	5500 19 19
--	------------------------	-----------------------------	---------------------------------------

RNAV (GPS) RWY 23

CHESAPEAKE RGNL (CPK)

RNP APCH.	<p>⚠ Rwy 23 helicopter visibility reduction below 1 SM NA. When local altimeter setting not received, use Norfolk Intl altimeter setting and increase all DA 36 feet and all MDA 40 feet. Baro-VNAV and YDP NA with Norfolk Intl altimeter setting. For uncompensated Baro-VNAV systems, LNAV/VNAV NA below -1.5°C or above 43°C.</p>	MISSED APPROACH: Climb to 2000 direct NALDE and hold.
-----------	--	---

AWOS-3 123.675	NORFOLK APP CON 118.9 353.7	GCO 135.075	UNICOM 123.075 (CTAF) 0
--------------------------	---------------------------------------	-----------------------	-----------------------------------



	-1.3	3.5 NM	4.1 NM	6.1 NM	
CATEGORY	A	B	C	D	
LPV DA	DA	311-1	292 (300-1)		
LNAV/VNAV DA	DA	312-1	293 (300-1)		
LNAV MDA	480-1	461 (500-1)	480-1 $\frac{3}{8}$	461 (500-1 $\frac{3}{8}$)	

NE-3, 20 FEB 2025 to 20 MAR 2025

NE-3, 20 FEB 2025 to 20 MAR 2025