

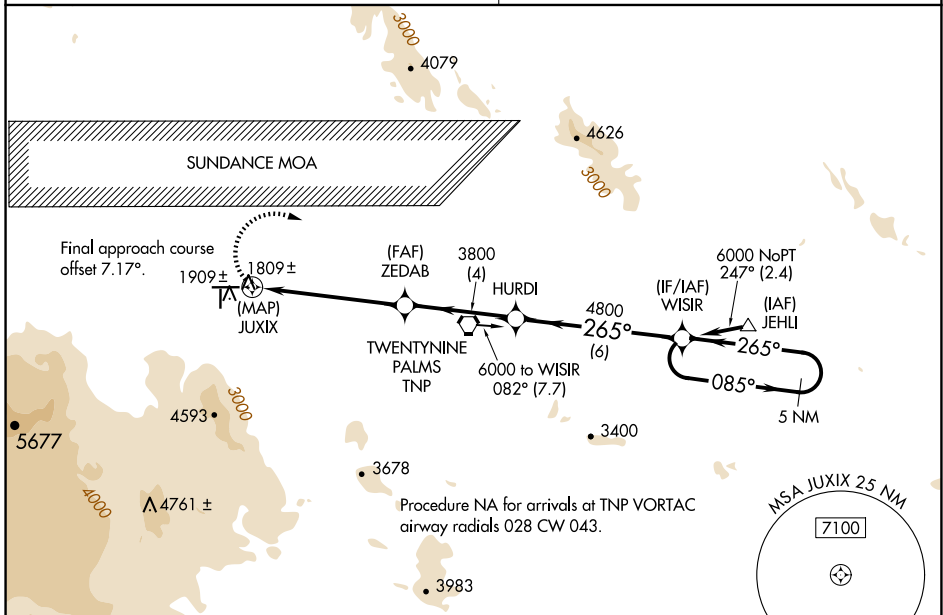
WAAS CH <b>70634</b> <b>W26A</b>	APP CRS <b>265°</b>	Rwy Idg TDZE Apt Elev	<b>5531</b> <b>1835</b> <b>1888</b>
--	------------------------	-----------------------------	---

# RNAV (GPS) RWY 26

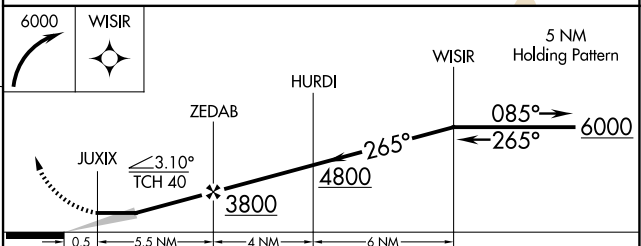
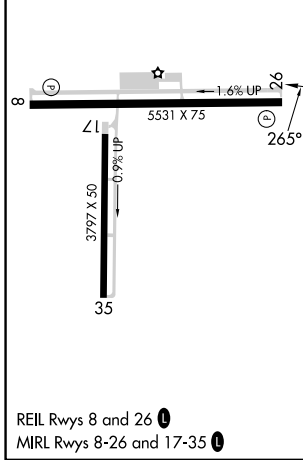
TWENTYNINE PALMS (TNP)

RNP APCH - GPS.	MISSED APPROACH: Climbing right turn to 6000 direct WISIR and hold.
<p><b>▼</b> Use PSP altimeter setting; when not received, procedure NA. Circling NA south of Rwy 8-26. Circling Rwy 8, 17 NA at night.</p> <p><b>▲</b> NA *Missed approach requires minimum climb of 425 feet per NM to 3900.</p>	

LOS ANGELES CENTER <b>128.15 285.6</b>	AUNICOM <b>122.8 (CTAF) 0</b>
---	----------------------------------



ELEV 1888	TDZE 1835
-----------	-----------



CATEGORY	A	B	C	D
LP MDA	2940-1¼ 1105 (1100-1¼)	2940-1½ 1105 (1100-1½)		NA
*LNAV MDA	3080-1¼ 1245 (1200-1¼)	3080-1½ 1245 (1200-1½)		NA
LNAV MDA	3180-1¼ 1345 (1300-1¼)	3180-1½ 1345 (1300-1½)		NA
<b>C</b> CIRCLING	3300-1¼ 1412 (1500-1¼)	3340-1½ 1452 (1500-1½)		NA

SW-3, 20 FEB 2025 to 20 MAR 2025

SW-3, 20 FEB 2025 to 20 MAR 2025