

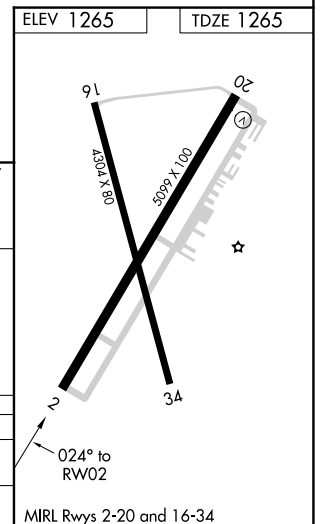
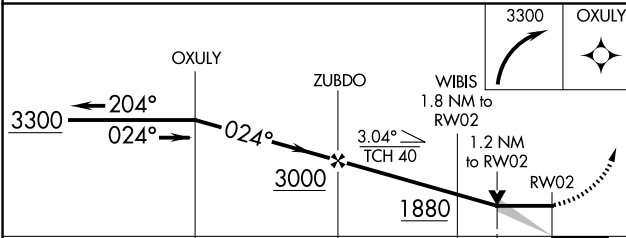
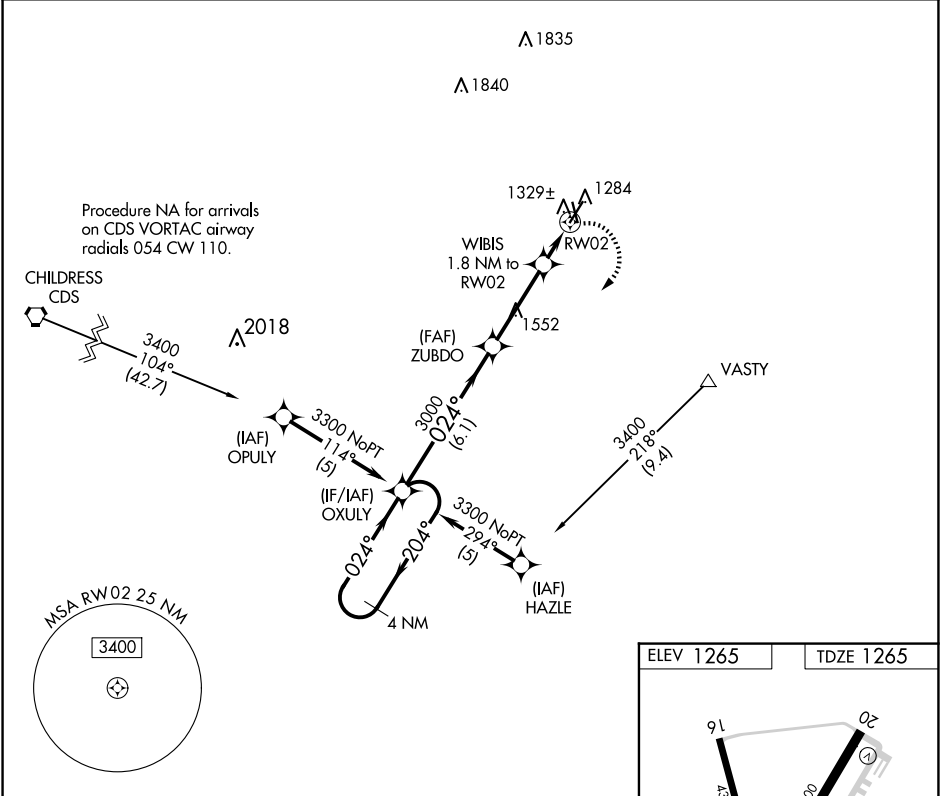
APP CRS	Rwy Idg	5099
024°	TDZE	1265
	Apt Elev	1265

RNAV (GPS) RWY 2

WILBARGER COUNTY (F05)

RNP APCH.	MISSED APPROACH: Climbing right turn to 3300 direct OXULY and hold.
<p>▼ When local altimeter setting not received, use Frederick altimeter setting: ▲ increase all MDA 40 feet. VDP NA when using Frederick altimeter setting.</p>	

AWOS-3 118.525	ALTUS APP CON* 125.1 353.7	UNICOM 122.8 (CTAF) 0
--------------------------	--------------------------------------	---------------------------------



CATEGORY	A	B	C	D
LNVA MDA	1680-1	415 (500-1)	1680-1¼ 415 (500-1¼)	NA
CIRCLING	1680-1 415 (500-1)	1720-1 455 (500-1)	1800-1½ 535 (600-1½)	NA

SC-2, 20 FEB 2025 to 20 MAR 2025

SC-2, 20 FEB 2025 to 20 MAR 2025