

WAAS CH 61119 W35A	APP CRS 354°	Rwy Idg TDZE Apt Elev	3501 1026 1030
--	------------------------	-----------------------------	---

RNAV (GPS) RWY 35

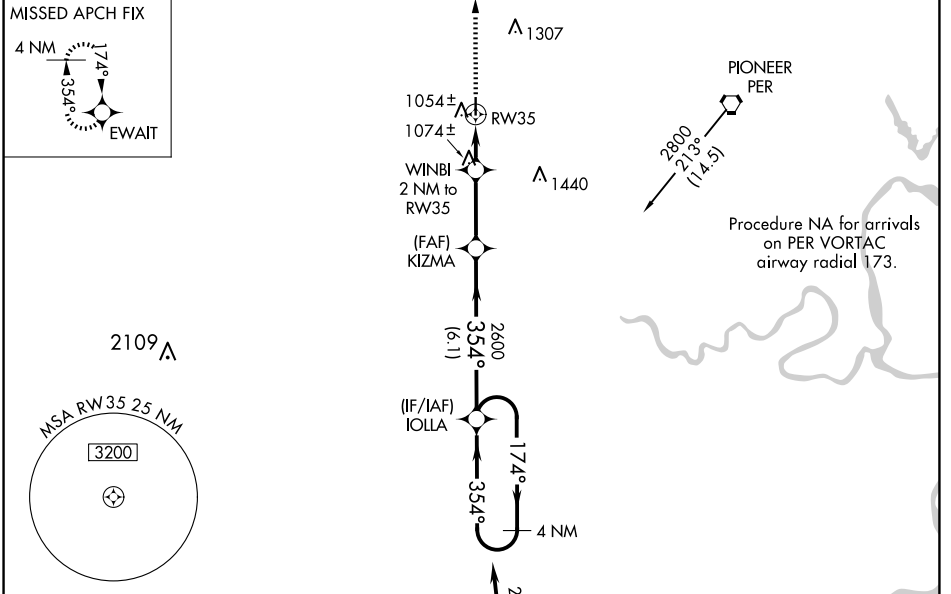
BLACKWELL-TONKAWA MUNI (BKN)

RNP APCH.

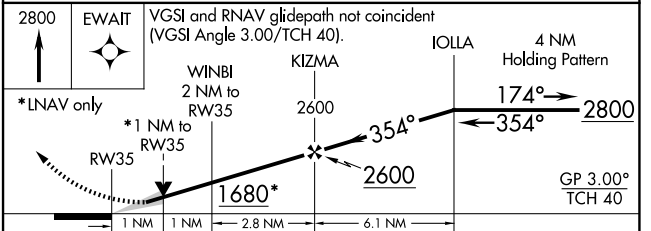
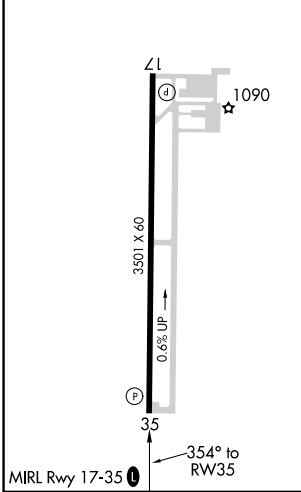
⚠ For uncompensated Baro-VNAV systems, LNAV/VNAV NA below -17°C or above 54°C. When local altimeter setting not received, use Ponca City altimeter setting and increase all DA 31 feet and all MDA 40 feet and LNAV/VNAV all Cts visibility 1/4 mile. Baro-VNAV and VDP NA when using Ponca City altimeter setting.

MISSED APPROACH: Climb to 2800 direct EWAIT and hold.

AWOS-3PT 120.575	KANSAS CITY CENTER 127.8 319.1	UNICOM 122.8 (CTAF) 0
----------------------------	--	---------------------------------



ELEV 1030	TDZE 1026
-----------	-----------



CATEGORY	A	B	C	D
LPV DA		1276-1	250 (300-1)	NA
LNAV/VNAV DA		1324-1	298 (300-1)	NA
LNAV MDA		1340-1	314 (400-1)	NA

SC-1, 20 FEB 2025 to 20 MAR 2025

SC-1, 20 FEB 2025 to 20 MAR 2025