

GARLAND FIVE DEPARTURE  
(GARL5.TT) 25/AN/24

(GARL5.TT) 24305  
GARLAND FIVE DEPARTURE

AL-6497 (FAA)

PARKER COUNTY (WEA)  
WEATHERFORD, TEXAS

LONE STAR DEP CON  
125.8 257.95  
CTAF  
122.7

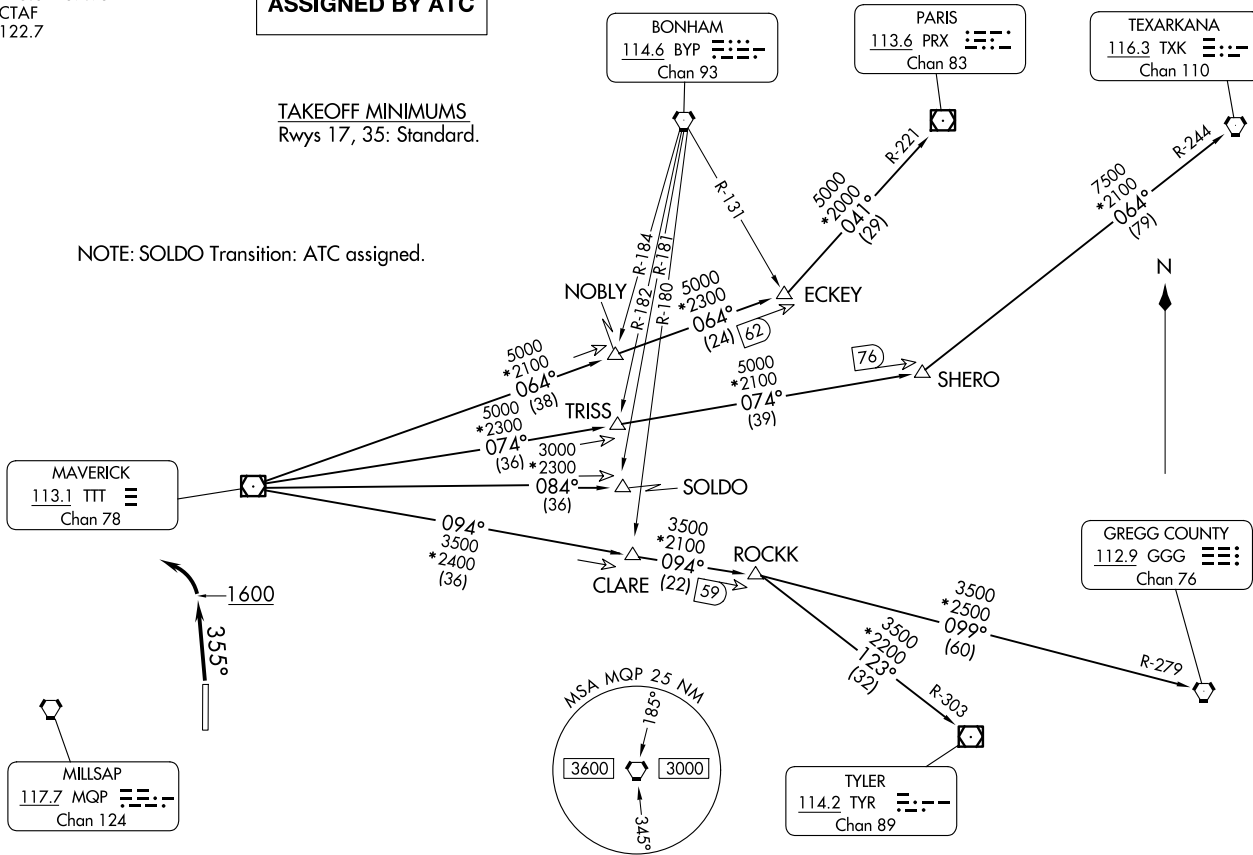
**TOP ALTITUDE:  
ASSIGNED BY ATC**

TAKEOFF MINIMUMS  
Rwys 17, 35: Standard.

RADAR and DME required.

NOTE: SOLDO Transition: ATC assigned.

NOTE: Chart not to scale.



(CONTINUED ON FOLLOWING PAGE)

PARKER COUNTY (WEA)  
WEATHERFORD, TEXAS

# GARLAND FIVE DEPARTURE



## DEPARTURE ROUTE DESCRIPTION

TAKEOFF RUNWAY 35: Climb on heading 355° to 1600 before turning left.

When entering controlled airspace, fly assigned heading for RADAR vectors to appropriate route. Maintain ATC assigned altitude.

GREGG COUNTY TRANSITION (GARL5.GGG): From over TTT VOR/DME on TTT R-094 to ROCKK, then on GGG R-279 to GGG VORTAC.

PARIS TRANSITION (GARL5.PRX): From over TTT VOR/DME on TTT R-064 to ECKEY, then on PRX R-221 to PRX VOR/DME.

SOLDO TRANSITION (GARL5.SOLDO): From over TTT VOR/DME on TTT R-084 to SOLDO.

TEXARKANA TRANSITION (GARL5.TXK): From over TTT VOR/DME on TTT R-074 to SHERO, then on TXK R-244 to TXK VORTAC.

TYLER TRANSITION (GARL5.TYR): From over TTT VOR/DME on TTT R-094 to ROCKK, then on TYR R-303 to TYR VOR/DME.

SC-2, 20 FEB 2025 to 20 MAR 2025

SC-2, 20 FEB 2025 to 20 MAR 2025