

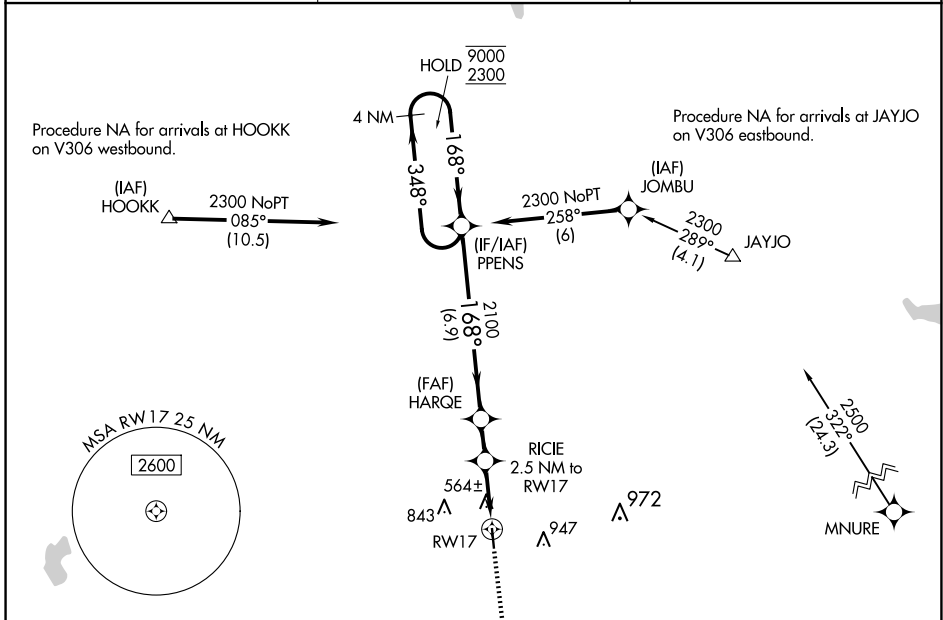
APP CRS	Rwy Idg	4000
168°	TDZE	484
	Apt Elev	484

RNAV (GPS) RWY 17

GIDDINGS-LEE COUNTY (GYB)

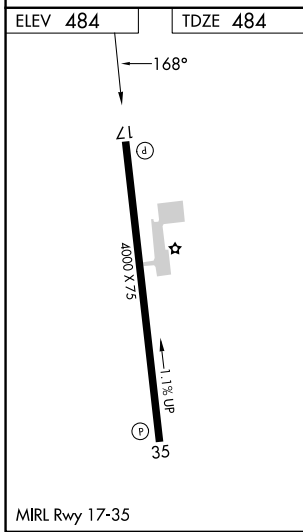
RNP APCH - GPS.		MISSED APPROACH: Climb to 2500 direct RAMOS and hold.
<p>▼ Procedure NA at night. Rwy 17 helicopter visibility reduction below 1 SM NA. When local altimeter setting not received, use AUS altimeter setting and increase all MDAs 100 feet and LNAV visibility Cat C ¼ SM, and Circling visibility Cat C ¼ SM.</p> <p>▲</p>		

AWOS-3 119.225	AUSTIN APP CON 127.225 317.65	UNICOM 123.05 (CTAF)
--------------------------	---	--------------------------------



SC-5, 20 FEB 2025 to 20 MAR 2025

SC-5, 20 FEB 2025 to 20 MAR 2025



<p>VGSI and descent angles not coincident (VGSI Angle 3.75/TCH 34).</p> <p>4 NM Holding Pattern</p> <p>PPENS</p> <p>HARQE</p> <p>RICIE 2.5 NM to RW17</p> <p>RW17</p> <p>2100</p> <p>1500</p> <p>3.75° TCH 40</p> <p>6.9 NM</p> <p>1.5 NM</p> <p>2.5 NM</p>				
CATEGORY	A	B	C	D
LNAV MDA	820-1 336 (400-1)			NA
CIRCLING	880-1 396 (400-1)	1160-1 676 (700-1)	1240-2¼ 756 (800-2¼)	NA