

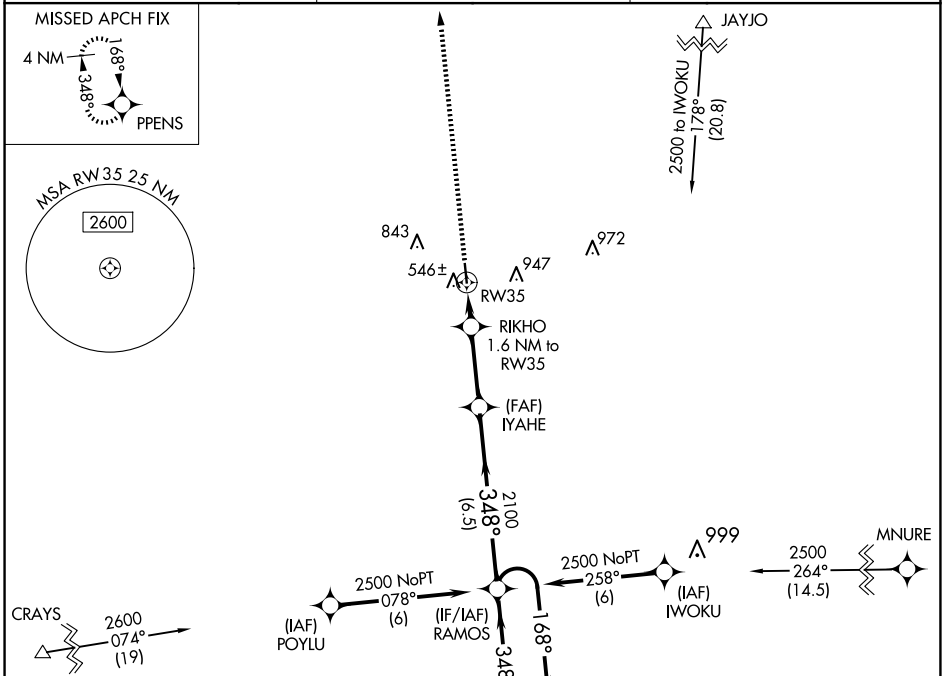
APP CRS	Rwy Idg	<b>4000</b>
<b>348°</b>	TDZE	<b>473</b>
	Apt Elev	<b>484</b>

# RNAV (GPS) RWY 35

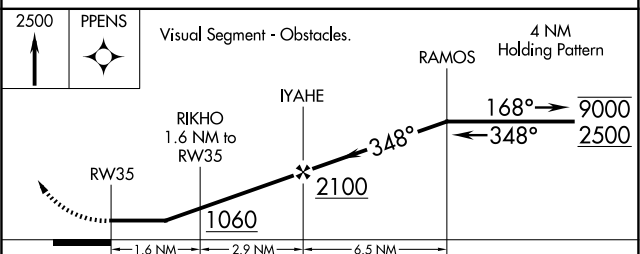
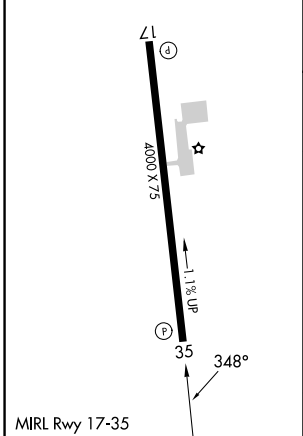
GIDDINGS-LEE COUNTY (GYB)

RNP APCH - GPS.		MISSED APPROACH: Climb to 2500 direct PPENS and hold.
<p><b>▼</b> Rwy 35 helicopter visibility reduction below 1 SM NA. Procedure NA at night.</p> <p><b>▲</b> When local altimeter setting not received, use AUS altimeter setting and increase all MDAs 100 feet and LNAV visibility Cat C ¼ SM, and Circling visibility Cat C ¼ SM.</p>		

AWOS-3 <b>119.225</b>	AUSTIN APP CON <b>127.225 317.65</b>	UNICOM <b>123.05 (CTAF)</b>
--------------------------	---	--------------------------------



ELEV <b>484</b>	TDZE <b>473</b>
-----------------	-----------------



CATEGORY	A	B	C	D
LNAV MDA	800-1 327 (400-1)			NA
CIRCLING	880-1 396 (400-1)	1160-1 676 (700-1)	1240-2¼ 756 (800-2¼)	NA

SC-5, 20 FEB 2025 to 20 MAR 2025

SC-5, 20 FEB 2025 to 20 MAR 2025