

# COPTER RNAV (GPS) X RWY 31

GRANT COUNTY (W99)

APP CRS <b>310°</b>	Rwy Idg <b>5000</b>
	TDZE <b>957</b>
	Apt Elev <b>963</b>

RNP APCH.

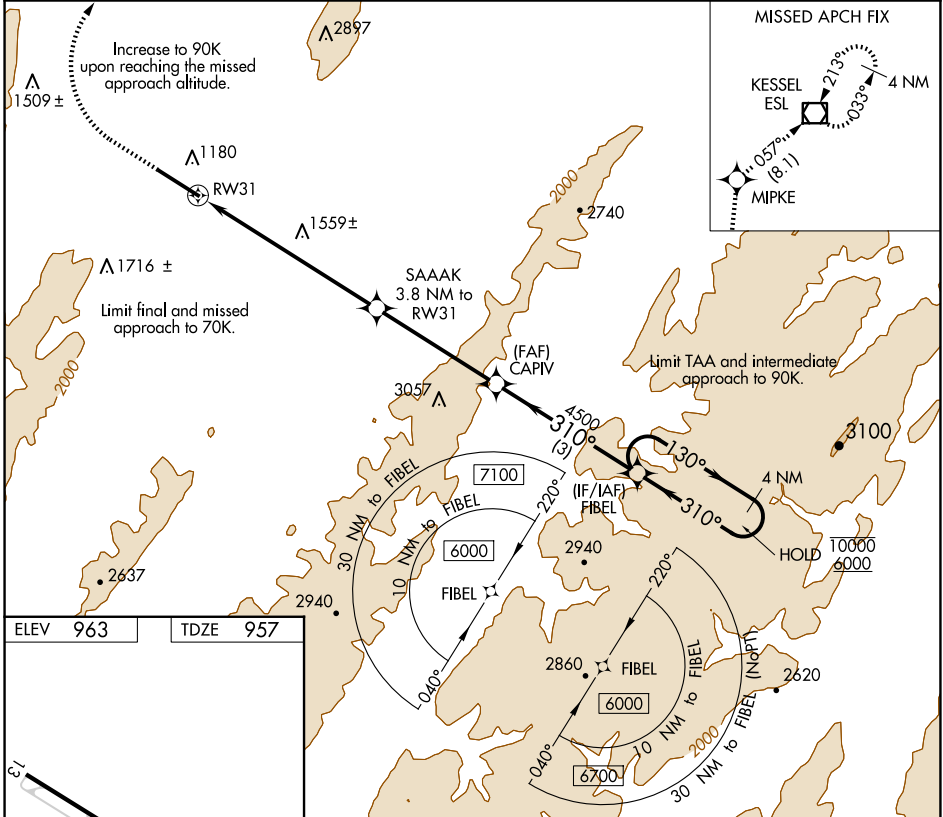
**NA** When local altimeter setting not received, procedure NA.  
**-8°C**

MISSED APPROACH: Climb to 1380 then climbing right turn to 5000 direct MIPKE and on track 057° to ESL VOR/DME and hold.

AWOS-3  
**124.475**

WASHINGTON CENTER  
**133.55 322.55**

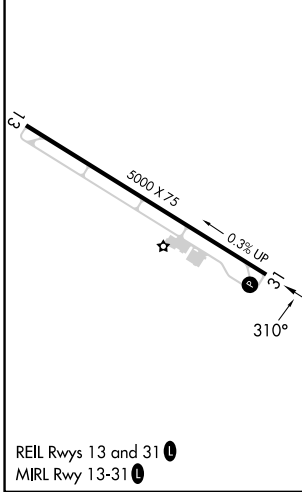
UNICOM  
**122.8 (CTAF)**



NE-4, 20 FEB 2025 to 20 MAR 2025

NE-4, 20 FEB 2025 to 20 MAR 2025

ELEV 963	TDZE 957
----------	----------



1380	5000	MIPKE	tr 057°	ESL	VGSI and descent angles not coincident (VGSI Angle 6.50/TCH 46).
					4 NM
					FIBEL Holding Pattern
<p>CATEGORY COPTER</p> <p>LNAV MDA 1880-<sup>3</sup>/<sub>4</sub> 923 (1000-<sup>3</sup>/<sub>4</sub>)</p>					

# COPTER RNAV (GPS) X RWY 31