

APP CRS	Rwy Idg	N/A
145°	TDZE	N/A
	Apt Elev	963

RNAV (GPS)-C

GRANT COUNTY (W99)

RNP APCH - GPS

⚠ When local altimeter setting not received, procedure NA.

⚠ MISSED APPROACH: Climb to 2900 then climbing left turn to 5000 direct ESL VOR/DME and hold.

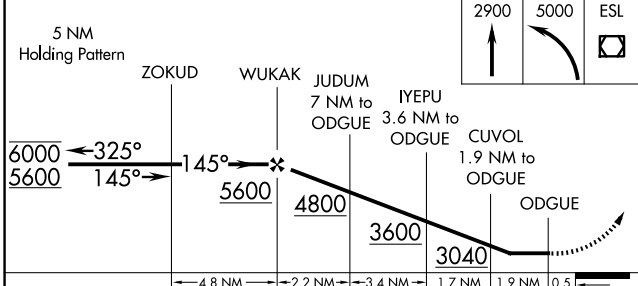
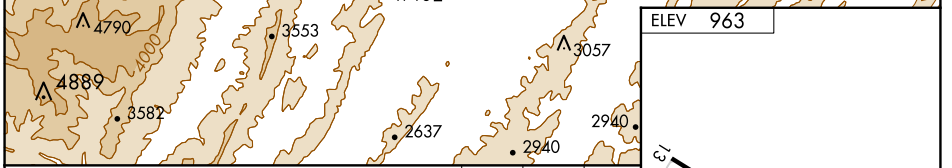
⚠ -8°C

AWOS-3 124.475	WASHINGTON CENTER 133.55 322.55	UNICOM 122.8 (CTAF)
--------------------------	---	-------------------------------

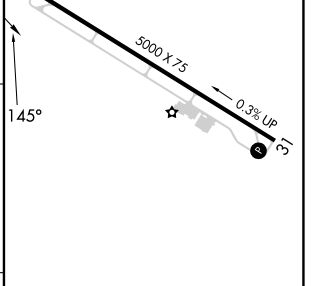


NE-4, 20 FEB 2025 to 20 MAR 2025

NE-4, 20 FEB 2025 to 20 MAR 2025



CATEGORY	A	B	C	D
C CIRCLING	2400-1¼ 1437 (1500-1¼)	2400-1½ 1437 (1500-1½)	NA	NA



MIRL Rwy 13-31 **⓪**

REIL Rws 13 and 31 **⓪**