

| | | |
|---|------------------------|---|
| LOC/DME I-JNX 111.15 Chan 48(Y) | APP CRS 032° | Rwy Idg 5500 TDZE 147 Apt Elev 164 |
|---|------------------------|---|

ILS Y or LOC Y RWY 3

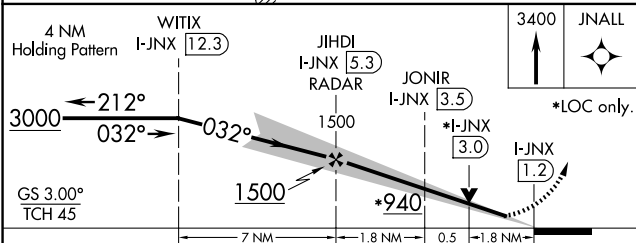
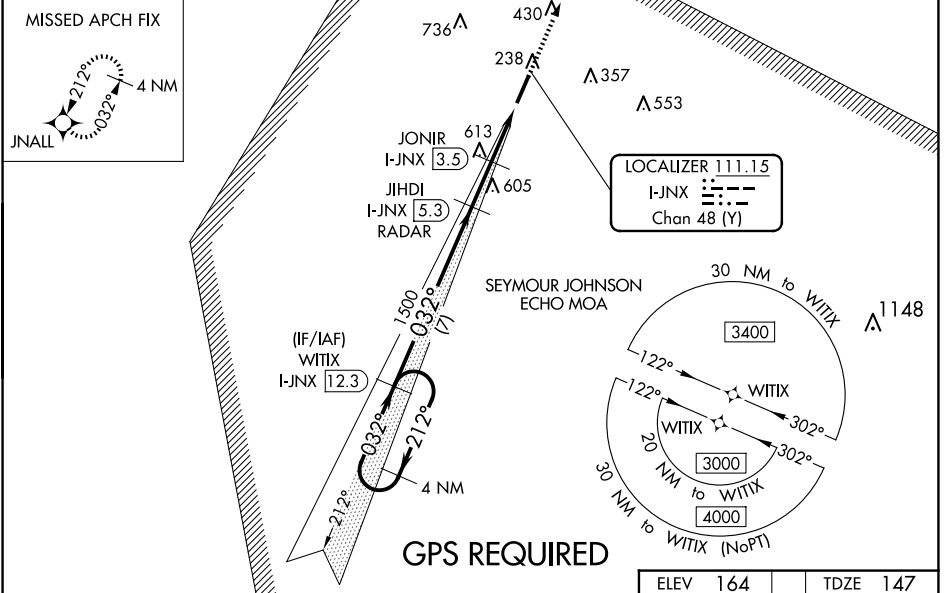
JOHNSTON RGNL (JNX)

NA GPS required. VDP NA with Erwin altimeter setting. When local altimeter setting not received, use Erwin altimeter setting: increase DA to 447 feet, increase all MDA 60 feet and S-LOC 3 Cat C/D and Circling Cat A visibility ¼ mile, and JONIR fix minimums S-LOC 3 Cat C/D visibility ½ mile and Circling Cat C ¼ mile. For inop MALSR, increase S-LOC 3 Cat C/D visibility to 2½ mile and JONIR fix minimums S-LOC 3 Cat C/D to 1¾ mile. For inop MALSR when using Erwin altimeter setting, increase S-ILS all Cats visibility to 1 mile.

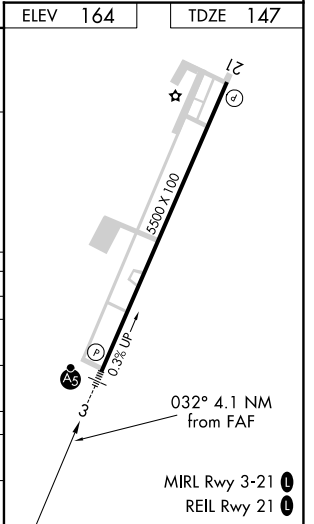
MALSR

MISSED APPROACH: Climb to 3400 direct JNALL and hold, continue climb-in-hold to 3400.

| | | | |
|--------------------------|---|-----------------------|--|
| AWOS-3 120.225 | RALEIGH APP CON 125.3 353.675 | GCO 135.075 | UNICOM 122.725 (CTAF) 1 |
|--------------------------|---|-----------------------|--|



| CATEGORY | A | B | C | D |
|--------------------|----------------------|------------------------|------------------------|------------------------|
| S-ILS 3 | 397-½ 250 (300-½) | | | |
| S-LOC 3 | 940-½ 793 (800-½) | 940-¾ 793 (800-¾) | 940-1¼ 776 (800-1¼) | 940-1¾ 793 (800-1¾) |
| CIRCLING | 940-1 776 (800-1) | 940-1¼ 776 (800-1¼) | 940-2½ 776 (800-2½) | 1100-3 936 (1000-3) |
| JONIR FIX MINIMUMS | | | | |
| S-LOC 3 | 780-½ | 633 (700-½) | 780-1¾ | 633 (700-1¾) |
| CIRCLING | 780-1 | 616 (700-1) | 920-2¼ 756 (800-2¼) | 1100-3 936 (1000-3) |



SE-2, 20 FEB 2025 to 20 MAR 2025

SE-2, 20 FEB 2025 to 20 MAR 2025