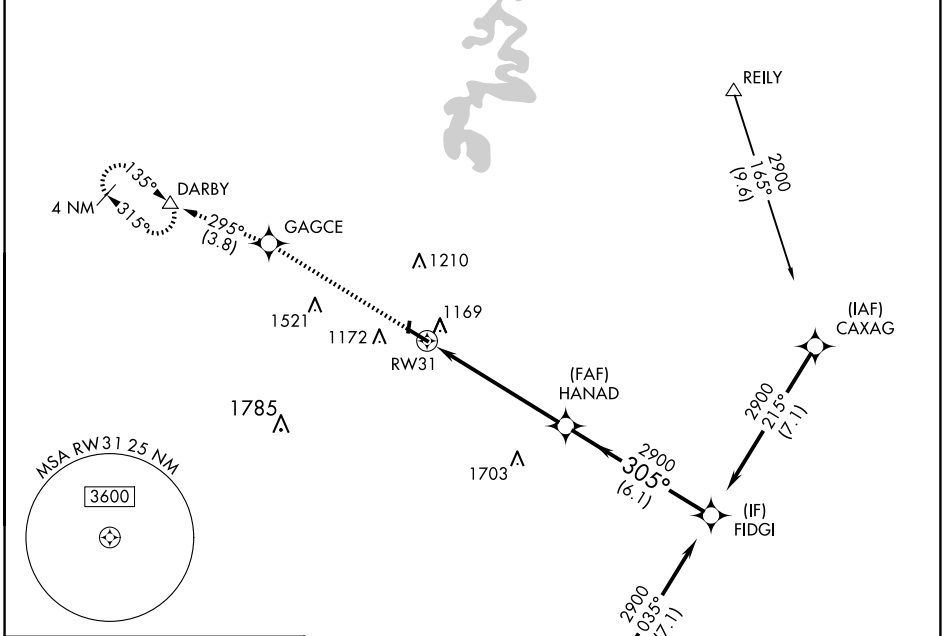


WAAS CH 70506 W31A	APP CRS 305°	Rwy Idg TDZE Apt Elev	5000 1016 1022
--	------------------------	-----------------------------	---

RNAV (GPS) RWY 31

STUART POWELL FLD (DVK)

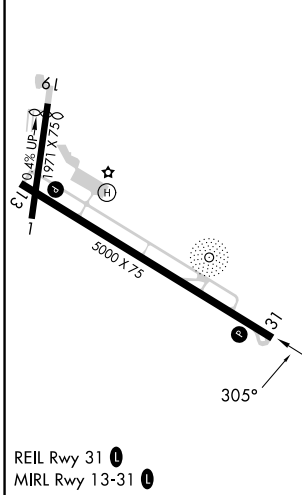
RNP APCH - GPS.		MISSED APPROACH: Climb to 3000 direct GAGCE and on track 295° to DARBY and hold.
<p>▼ For uncompensated Baro-VNAV systems, LNAV/VNAV NA below -17° C or above 54° C.</p> <p>▲</p>		
AWOS-3 128.325	LEXINGTON APP CON 120.15 259.3	UNICOM 122.8 (CTAF) 0



SE-1, 20 FEB 2025 to 20 MAR 2025

SE-1, 20 FEB 2025 to 20 MAR 2025

ELEV 1022	TDZE 1016
-----------	-----------



3000	GAGCE	Ir 295°	DARBY	HANAD	FIDGI	
				2900	2900	
				1.5 NM to RW31	305°	2900
				1.5 NM	4.4 NM	6.1 NM
						GP 3.00° TCH 30
CATEGORY	A	B	C	D		
LPV DA		1216-1	200 (200-1)			
LNAV/VNAV DA		1492-1 $\frac{3}{8}$	476 (500-1 $\frac{3}{8}$)			
LNAV MDA	1520-1	504 (500-1)	1520-1 $\frac{3}{8}$	504 (500-1 $\frac{3}{8}$)		
<input checked="" type="checkbox"/> CIRCLING	1520-1 498 (500-1)	1680-1 658 (700-1)	1720-2 698 (700-2)	1840-2 $\frac{3}{4}$ 818 (900-2 $\frac{3}{4}$)		