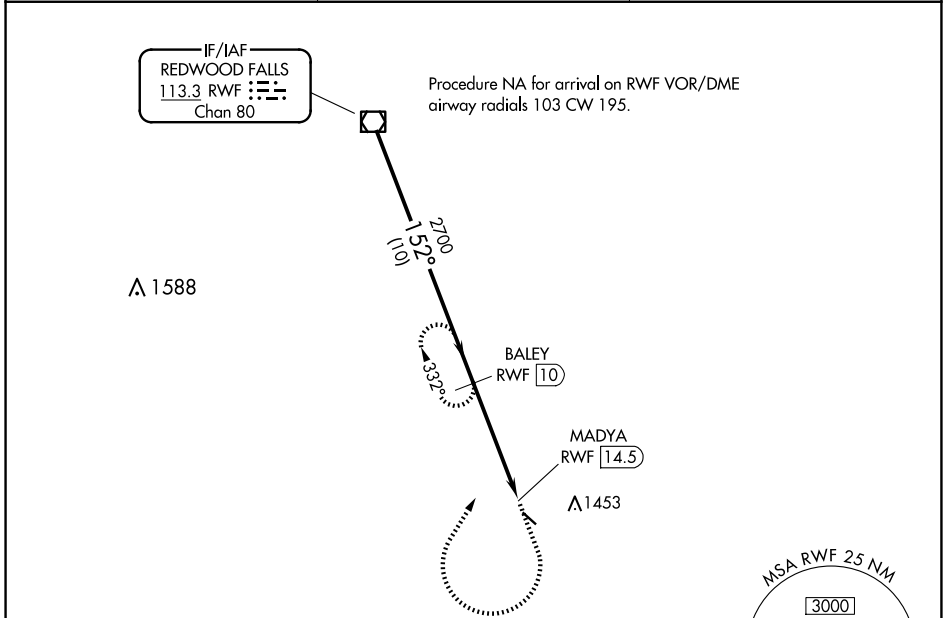


VOR/DME RWF 113.3 Chan 80	APP CRS 152°	Rwy Idg 3402 TDZE 1073 Apt Elev 1073
---	------------------------	---

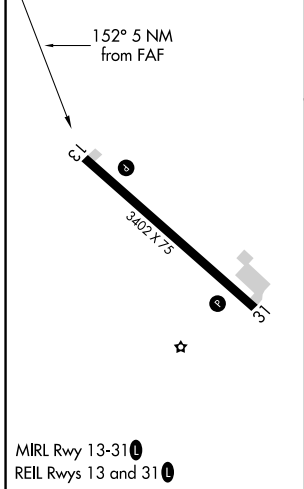
VOR RWY 13
SPRINGFIELD MUNI (D42)

DME required.	MISSED APPROACH: Climb to 2000 then climbing right turn to 2700 on heading 030° and RWF R-152 to BALEY/10 DME and hold.
<p>▼ Procedure NA at night. Rwy 13 helicopter visibility reduction below 1 SM NA. Use Redwood Falls altimeter setting.</p> <p>▲ NA</p>	

RWF ASOS 126.575	MINNEAPOLIS CENTER 127.1 290.2	UNICOM 122.8 (CTAF) 0
----------------------------	--	---------------------------------



ELEV 1073	TDZE 1073
-----------	-----------



VGSI and descent angles not coincident (VGSI Angle 3.00/TCH 20).		2000	2700	RWF R-152	BALEY RWF 10
RWF VOR/DME	BALEY RWF 10	↑	hdg 030°		
2700	2700	3.01° TCH 40		MADYA RWF 14.5	
10 NM		4.5 NM		0.5	
CATEGORY	A	B	C	D	
S-13	1620-1	547 (600-1)	1620-1 3/4 547 (600-1 3/4)	NA	
CIRCLING	1660-1 587 (600-1)	1820-1 747 (800-1)	1820-2 1/4 747 (800-2 1/4)	NA	

NC-1, 20 FEB 2025 to 20 MAR 2025

NC-1, 20 FEB 2025 to 20 MAR 2025