

WAAS CH 90131 W10A	APP CRS 097°	Rwy Idg TDZE Apt Elev	3400 1236 1238
--	------------------------	-----------------------------	---

RNAV (GPS) RWY 10

NEILLSVILLE MUNI (VIQ)

Baro-VNAV NA. DME/DME RNP-0.3 NA. Helicopter visibility reduction below 3/4 SM NA. Use Marshfield altimeter setting; when not received, use Wisconsin Rapids altimeter setting and increase all DA 63 feet and all MDA 80 feet. Increase LPV and LNAV/VNAV Cats A/B visibility 1/4 mile.

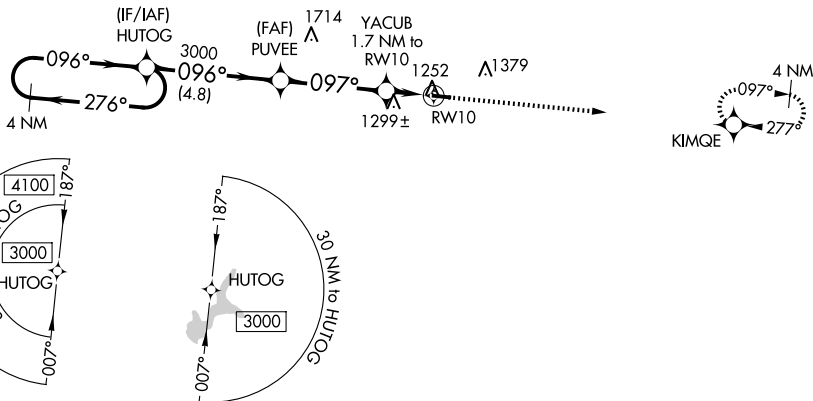
MISSED APPROACH: Climb to 3000 direct KIMQE and hold.

MFI ASOS
121.575

MINNEAPOLIS CENTER
124.4 317.7

UNICOM
122.8 (CTAF) 0

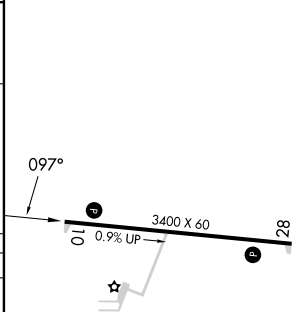
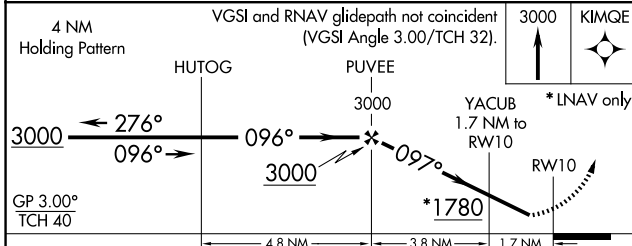
3095



EC-3, 20 FEB 2025 to 20 MAR 2025

EC-3, 20 FEB 2025 to 20 MAR 2025

ELEV 1238 TDZE 1236



CATEGORY	A	B	C	D
LPV DA	1526-1	290 (300-1)		NA
LNAV/VNAV DA	1526-1	290 (300-1)		NA
LNAV MDA	1600-1	364 (400-1)		NA
CIRCLING	1720-1	482 (500-1)		NA

LIRL Rwy 10-28 0