

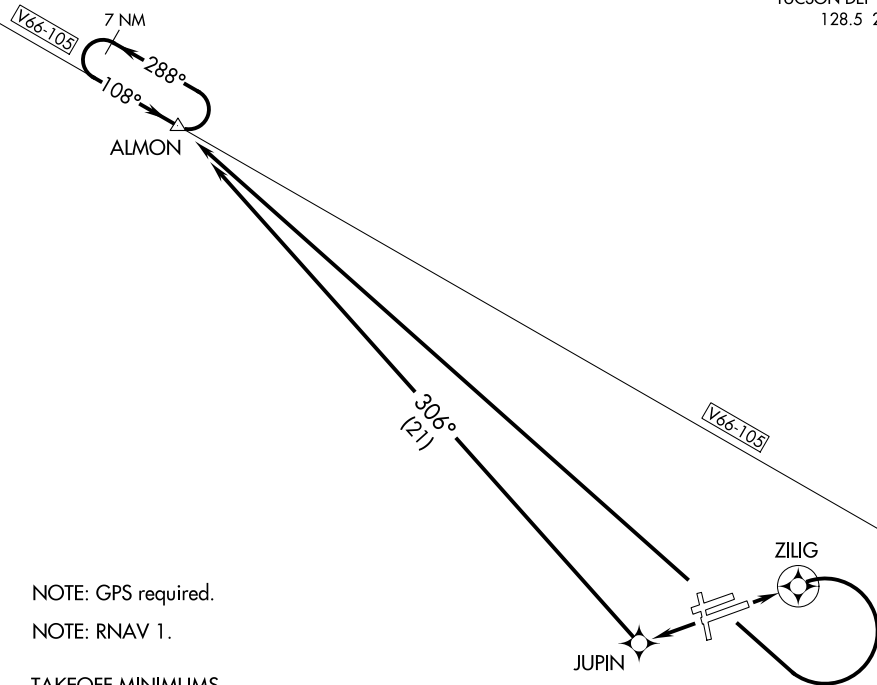
(ALMON1.ALMON) 21224

# ALMON ONE DEPARTURE (OBSTACLE) (RNAV)

AL-6513 (FAA)

RYAN FLD (RYN)  
TUCSON, ARIZONA

GND CON  
118.2  
RYAN TOWER ★  
125.8  
TUCSON DEP CON  
128.5 273.6



NOTE: GPS required.

NOTE: RNAV 1.

### TAKEOFF MINIMUMS

Rwys 6L, 15, 24R, 33: NA, ATC.

Rwy 6R: Standard with a minimum climb of 309' per NM to 4400.

Rwy 24L: Standard.

### TAKEOFF OBSTACLE NOTES

Rwy 6R: Bushes beginning 331' from DER, 293' right of centerline, up to 28' AGL/2428' MSL.

Bush 166' from DER, 366' left of centerline, 8' AGL/2408' MSL.

Rwy 24L: Bush 282' from DER, 462' left of centerline, 10' AGL/2410' MSL.

Windsock 280' from DER, 248' right of centerline, 18' AGL/2408' MSL.

Tree 1401' from DER, 724' right of centerline, 44' AGL/2434' MSL.

NOTE: Chart not to scale.

### DEPARTURE ROUTE DESCRIPTION

**TAKEOFF RUNWAY 6R:** Climb direct ZILIG then via depicted route to ALMON. Maintain 8000 or assigned altitude.

**TAKEOFF RUNWAY 24L:** Climb direct JUPIN then via depicted route to ALMON. Maintain 8000 or assigned altitude.

# ALMON ONE DEPARTURE (OBSTACLE) (RNAV)

(ALMON1.ALMON) 29JUL10

TUCSON, ARIZONA  
RYAN FLD (RYN)

SW-4, 20 FEB 2025 to 20 MAR 2025

SW-4, 20 FEB 2025 to 20 MAR 2025