

APP CRS	Rwy Idg	N/A
342°	TDZE	N/A
	Apt Elev	4705

RNAV (GPS)-A

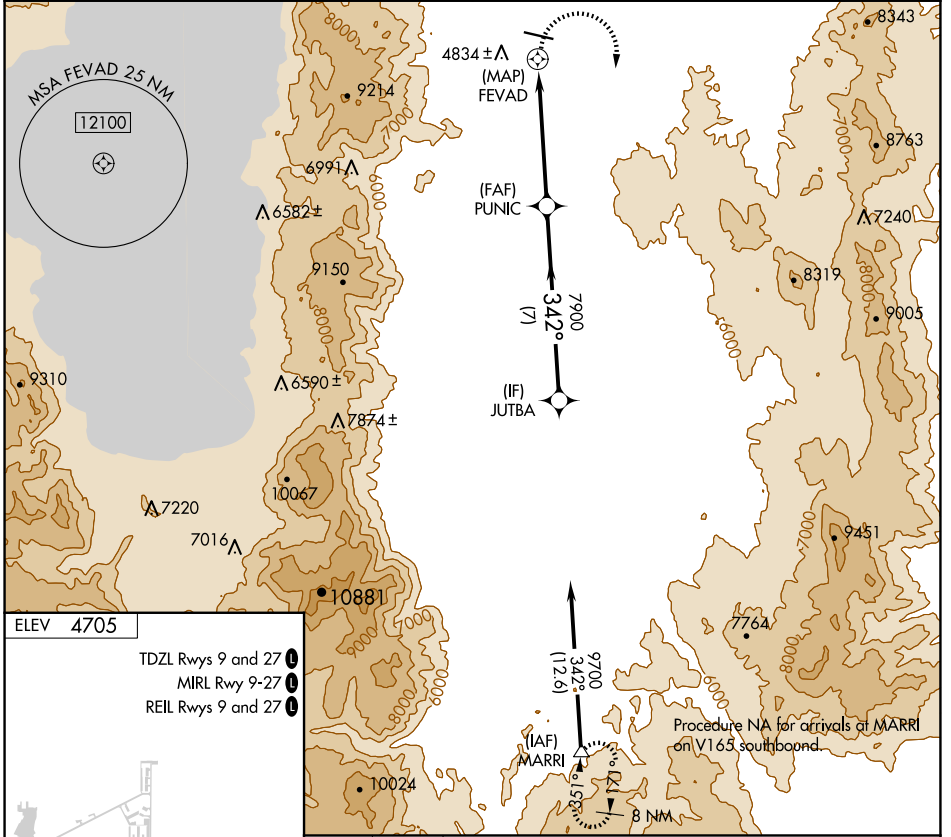
CARSON CITY (CXP)

RNP APCH.

Procedure NA at night. When local altimeter setting not received, use Reno/Tahoe Intl altimeter setting and increase all MDA 540 feet. Circling NA north of Rwy 9-27.

MISSED APPROACH: Climbing right turn to 13400 direct MARRI and hold, continue climb-in-hold to 13400.

AWOS-3PT 119.925	NORCAL APP CON 119.2 279.55	CLNC DEL 133.25	UNICOM 123.0 (CTAF) 0
----------------------------	---------------------------------------	---------------------------	---------------------------------



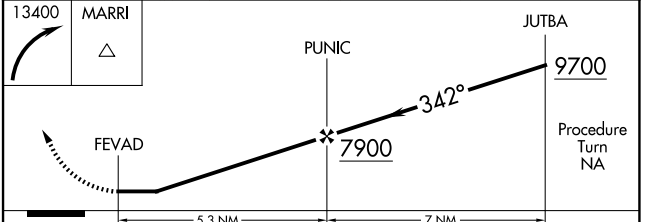
ELEV 4705

TDZL Rwys 9 and 27 **0**

MIRL Rwy 9-27 **1**

REIL Rwys 9 and 27 **0**

342°



CATEGORY	A	B	C	D
C CIRCLING	6380-1¼ 1675 (1700-1¼)	6380-1½ 1675 (1700-1½)	6380-3 1675 (1700-3)	7660-3 2955 (3000-3)

SW-4, 20 FEB 2025 to 20 MAR 2025

SW-4, 20 FEB 2025 to 20 MAR 2025