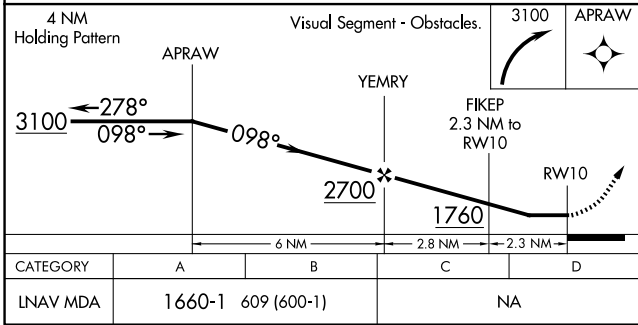
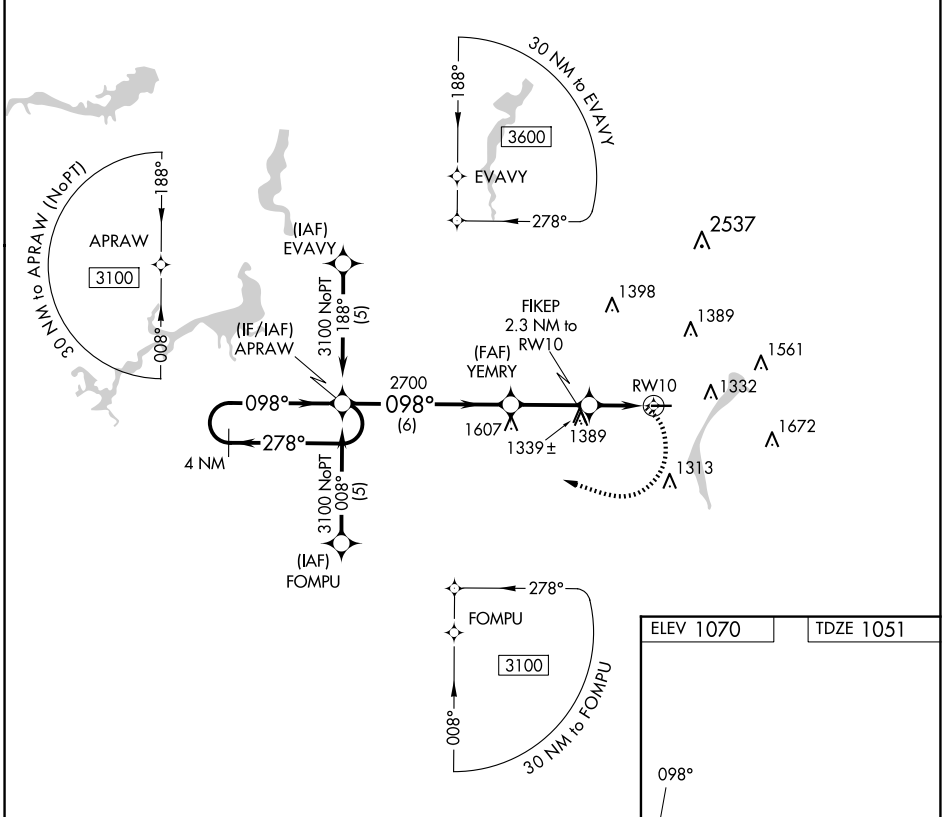


| | | |
|-------------|----------|-------------|
| APP CRS | Rwy Idg | 3664 |
| 098° | TDZE | 1051 |
| | Apt Elev | 1070 |

RNAV (GPS) RWY 10

YOUNGSTOWN ELSER METRO (4G4)

| | | |
|---|---------------|---|
| RNP APCH. | | MISSED APPROACH: Climbing right turn to 3100 direct APRAW and hold. |
| <p>▽ Rwy 10 helicopter visibility reduction below 1 SM NA. Obtain local altimeter setting on CTAF; when not received, use New Castle altimeter setting and increase all MDA 40 feet. Procedure NA at night.</p> <p>▲ NA</p> | | |
| YOUNGSTOWN APP CON ★ | CLNC DEL | UNICOM |
| 133.95 322.3 | 119.25 | 123.05 (CTAF) |



| | |
|-----------|-----------|
| ELEV 1070 | TDZE 1051 |
|-----------|-----------|

| | | | | |
|----------|--------|-------------|----|---|
| CATEGORY | A | B | C | D |
| LNAV MDA | 1660-1 | 609 (600-1) | NA | |

MIRL Rwy 10-28
REIL Rwys 10 and 28

EC-2, 20 FEB 2025 to 20 MAR 2025

EC-2, 20 FEB 2025 to 20 MAR 2025