

WAAS CH <b>72807</b> <b>W14A</b>	APP CRS <b>147°</b>	Rwy Idg <b>4600</b> TDZE <b>1142</b> Apt Elev <b>1145</b>
--	------------------------	---

# RNAV (GPS) RWY 14

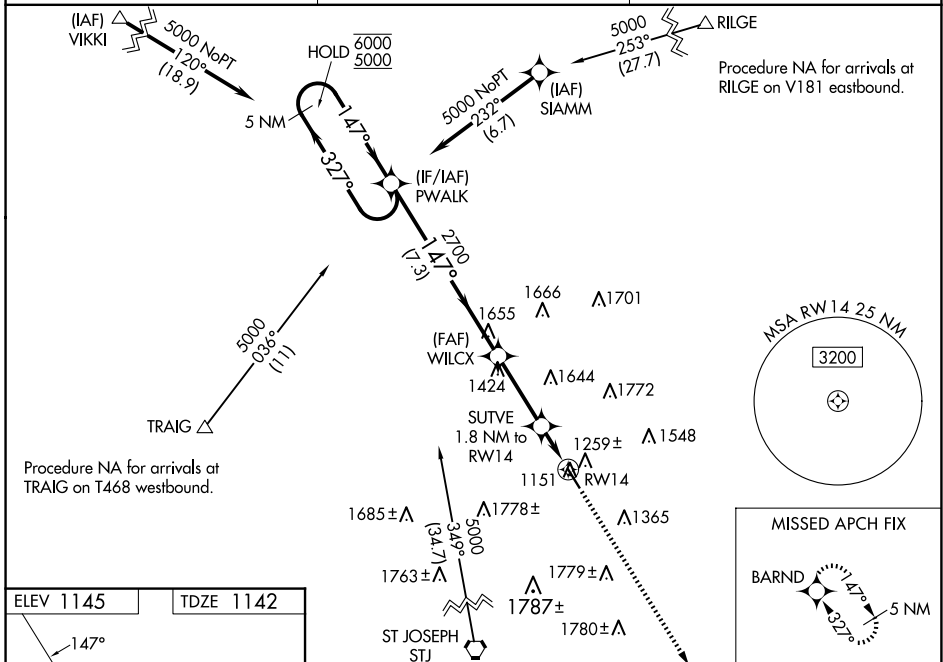
NORTHWEST MISSOURI RGNL (EVU)

RNP APCH - GPS.

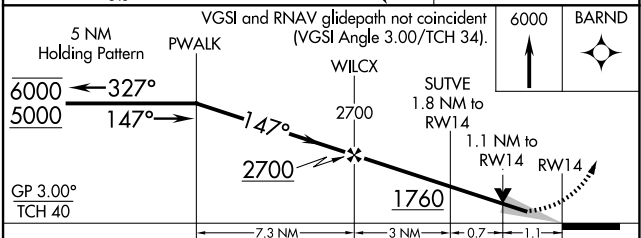
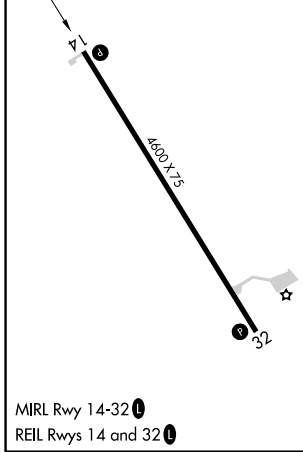
**NA** Circling NA east of Rwy 14-32. For uncompensated Baro-VNAV systems, LNAV/VNAV NA below -17°C or above 54°C. When local altimeter setting not received, use St. Joseph altimeter setting and increase LPV DA to 1517 feet, LNAV/VNAV DA to 1682 feet and all visibilities ½ SM. Increase all MDAs 140 feet, and LNAV visibility Cat C ¾ SM. Baro-VNAV and VDP NA when using St. Joseph altimeter setting.

**MISSED APPROACH:** Climb to 6000 direct BARND and hold, continue climb-in-hold to 6000.

AWOS-3PT <b>118.225</b>	MINNEAPOLIS CENTER <b>119.6 290.4</b>	UNICOM <b>122.8 (CTAF)</b>
----------------------------	--	-------------------------------



ELEV 1145	TDZE 1142
-----------	-----------



CATEGORY	A	B	C	D
LPV DA	1392-1	250 (300-1)		NA
LNAV/VNAV DA	1557-1½	415 (500-1½)		NA
LNAV MDA	1520-1	378 (400-1)		NA
CIRCLING	1560-1 415 (500-1)	1600-1 455 (500-1)	2120-3 975 (1000-3)	NA

NC-3, 20 FEB 2025 to 20 MAR 2025

NC-3, 20 FEB 2025 to 20 MAR 2025