

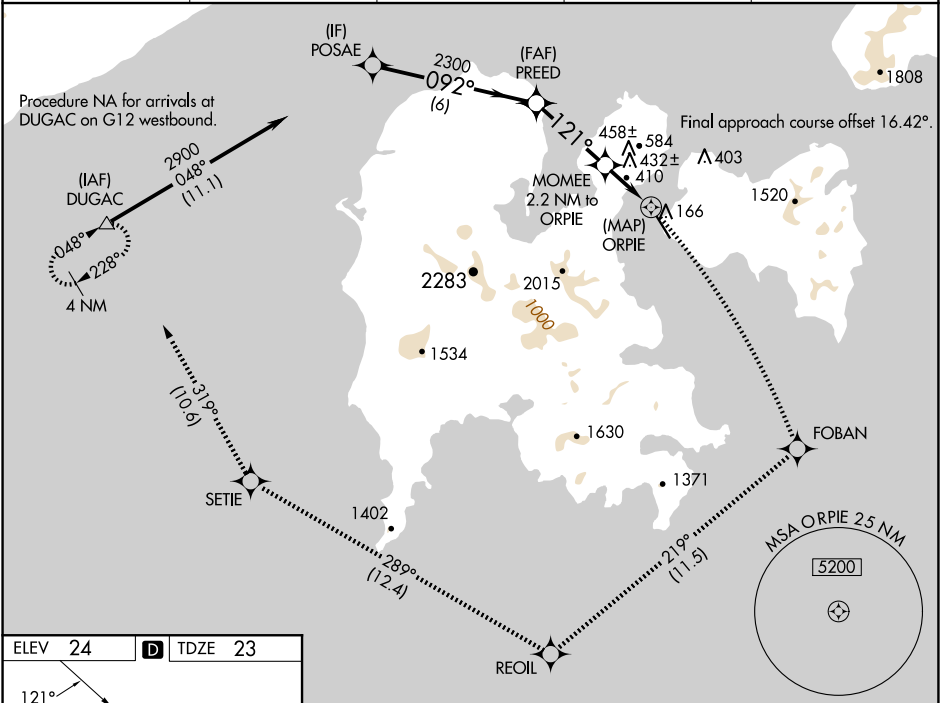
WAAS CH <b>56245</b> <b>W14A</b>	APP CRS <b>121°</b>	Rwy Idg <b>4099</b> TDZE <b>23</b> Apt Elev <b>24</b>
--	------------------------	---

# RNAV (GPS) Z RWY 14

SAND POINT (SDP) (PASD)

RNP APCH-GPS.	MISSED APPROACH: Climbing right turn to 5000 on the RNAV missed approach route to DUGAC and hold.
Circling NA northeast of Rwy 14-32.	

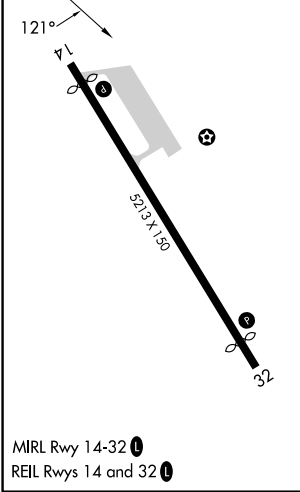
AWOS-3P <b>134.85</b>	ANCHORAGE CENTER <b>125.35 346.3</b>	CLNC DEL <b>122.3 (CTAF) 0</b>	COLD BAY RADIO <b>122.3</b>	UNICOM <b>122.8</b>
--------------------------	---	-----------------------------------	--------------------------------	------------------------



AK, 20 FEB 2025 to 17 APR 2025

AK, 20 FEB 2025 to 17 APR 2025

ELEV <b>24</b>	<b>D</b>	TDZE <b>23</b>
----------------	----------	----------------



MIRL Rwy 14-32   
 REIL Rwy 14 and 32

5000	FOBAN	tr 219°	REOIL	tr 289°	SETIE	tr 319°	DUGAC
POSAB	PREED	VGS1 and descent angles not coincident (VGS1 Angle 3.60/TCH 31).					
2900	092°	3.49° TCH 60	2300	121°	1080	1.1 NM to ORPIE	ORPIE
6 NM		3.3 NM		1.1 NM	1.1 NM	0.5	
CATEGORY	A	B	C	D			
LP MDA	660-1	637 (700-1)	660-1¾	637 (700-1¾)			
LNAV MDA	820-1 797 (800-1)	820-1¼ 797 (800-1¼)	820-2½	797 (800-2½)			
<b>C</b> CIRCLING	820-1 796 (800-1)	820-1¼ 796 (800-1¼)	1580-3 1556 (1600-3)	2240-3 2216 (2300-3)			

SAND POINT, ALASKA  
Amdt 2 02DEC21

55°19'N-160°31'W

# RNAV (GPS) Z RWY 14