

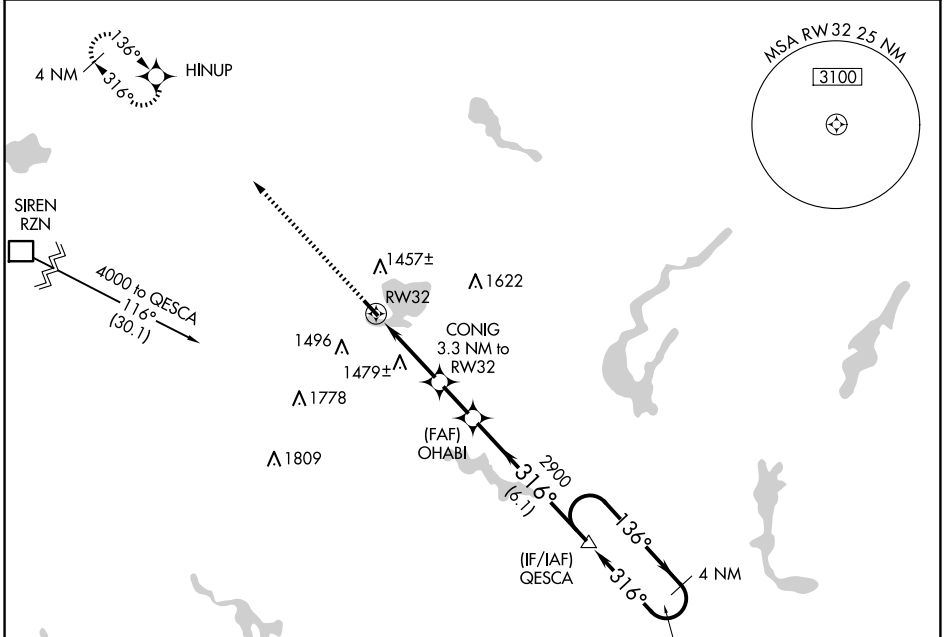
APP CRS	Rwy Idg	3500
316°	TDZE	1233
	Apt Elev	1233

RNAV (GPS) RWY 32

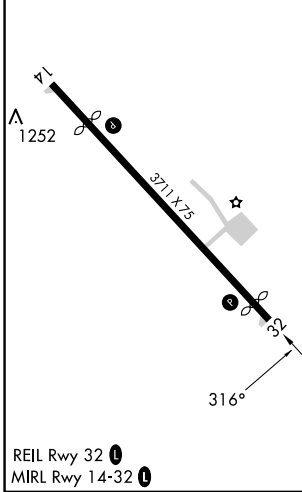
SHELL LAKE MUNI (SSQ)

RNP APCH.	<p>Procedure NA at night. Rwy 32 helicopter visibility reduction below 1 SM NA.</p> <p>NA Use Cumberland altimeter setting.</p>	MISSED APPROACH: Climb to 4000 direct HINUP and hold.
-----------	---	---

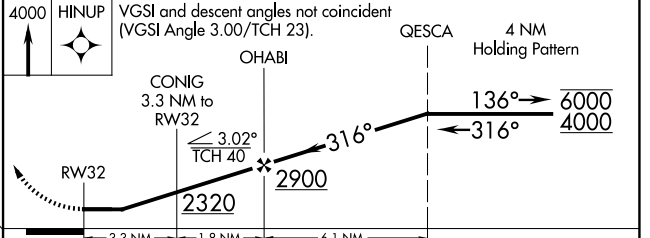
UBE AWOS-3PT 119.175	MINNEAPOLIS CENTER 126.45 276.4	UNICOM 122.8 (CTAF)
--------------------------------	---	-------------------------------



ELEV	1233	D	TDZE	1233
------	------	----------	------	------



4000 HINUP	VGSI and descent angles not coincident (VGSI Angle 3.00/TCH 23).		QESCA	4 NM Holding Pattern
	CONIG 3.3 NM to RW32	OHABI		
	RW32			



CATEGORY	A	B	C	D
LNAV MDA	1800-1 567 (600-1)		1800-1½ 567 (600-1½)	1800-1¾ 567 (600-1¾)
CIRCLING	1840-1 607 (700-1)		1840-1¾ 607 (700-1¾)	2020-2½ 787 (800-2½)

EC-3, 20 FEB 2025 to 20 MAR 2025

EC-3, 20 FEB 2025 to 20 MAR 2025