

| | | |
|----------------------------|------------------------|-----------------|
| LOC I-HNZ 109.75 | APP CRS 060° | Rwy Idg 5501 |
| | | TDZE 526 |
| | | Apt Elev 526 |

LOC RWY 6

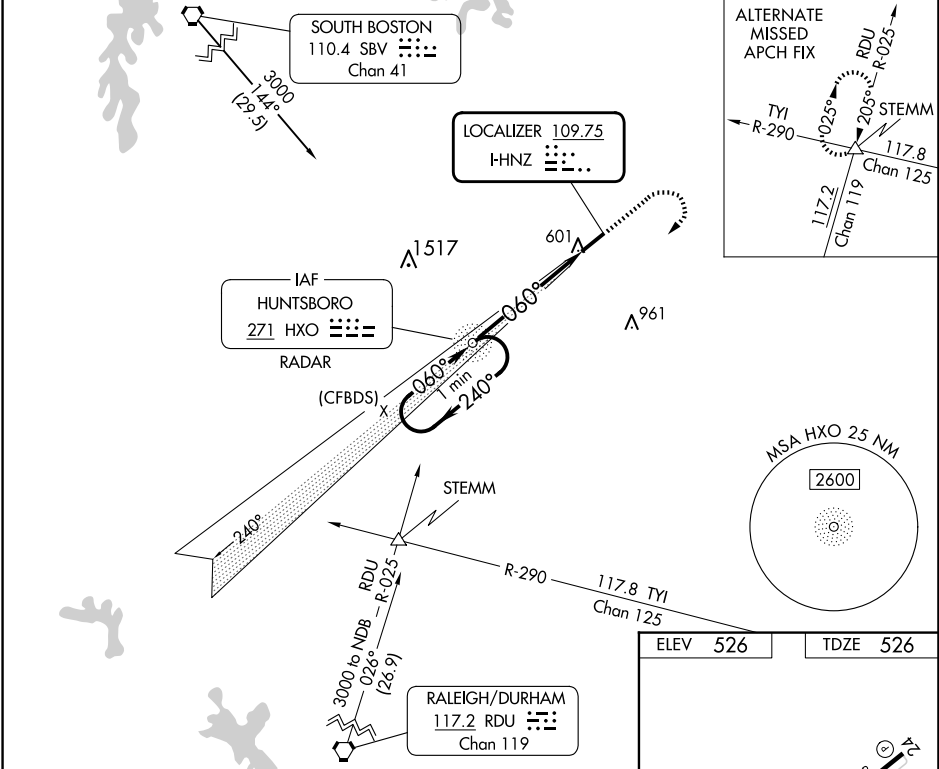
HENDERSON/OXFORD (HNZ)

ADF or RADAR required. ADF or RADAR required for procedure entry.

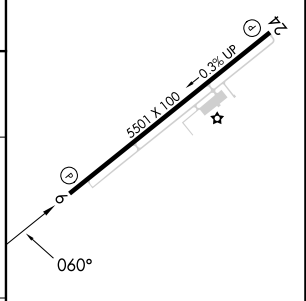
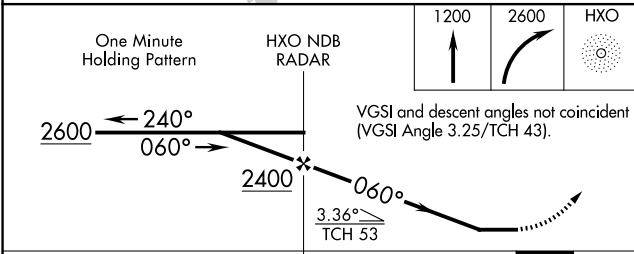
▼ Rwy 6 helicopter visibility reduction below 3/4 SM NA. When local altimeter setting not received, use Roxboro altimeter setting and increase all MDA 80 feet; increase S-6 Cat C/D visibility 1/2 SM and Circling Cat C and D visibility 1/4 SM.

MISSED APPROACH: Climb to 1200 then climbing right turn to 2600 direct HXO NDB/RADAR and hold.

| | | |
|--------------------------|--|---------------------------------|
| AWOS-3 118.625 | RALEIGH APP CON 132.35 256.9 | UNICOM 122.8 (CTAF) 0 |
|--------------------------|--|---------------------------------|



| | |
|----------|----------|
| ELEV 526 | TDZE 526 |
|----------|----------|



| CATEGORY | A | B | C | D | REIL Rwy 6 0 | MIRL Rwy 6-24 0 |
|----------|-------|-------------|-------------------------------|-------------------------------|-------------------|--------------------------|
| S-6 | 980-1 | 454 (500-1) | 980-1 3/8 | 454 (500-1 3/8) | FAF to MAP 5.2 NM | |
| CIRCLING | 980-1 | 454 (500-1) | 1100-1 1/2 574 (600-1 1/2) | 1280-2 1/2 754 (800-2 1/2) | Knots | 60 90 120 150 180 |
| | | | | | Min:Sec | 5:12 3:28 2:36 2:05 1:44 |

SE-2, 20 FEB 2025 to 20 MAR 2025

SE-2, 20 FEB 2025 to 20 MAR 2025