

WAAS CH 50139 W34A	APP CRS 337°	Rwy Idg TDZE Apt Elev	5001 769 774
--	------------------------	-----------------------------	---

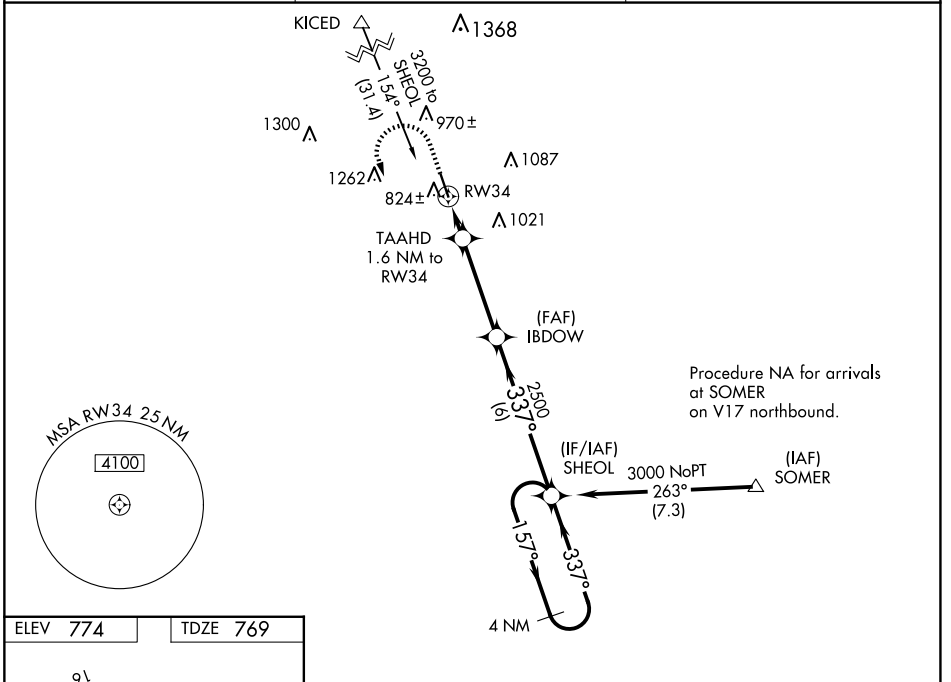
RNAV (GPS) RWY 34

CASTROVILLE MUNI (CVB)

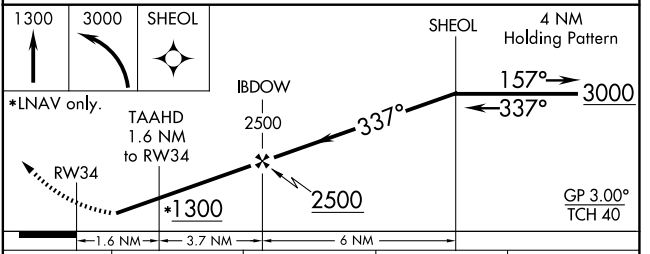
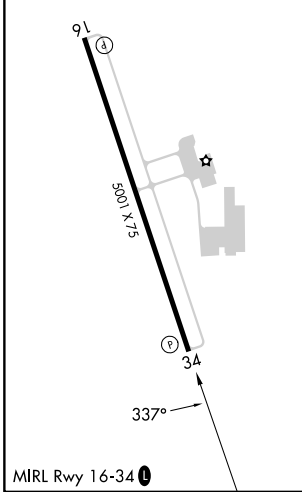
⚠ For uncompensated Baro-VNAV systems, LNAV/VNAV NA below -15°C (5°F) or above 54°C (130°F). DME/DME RNP-0.3 NA. When local altimeter setting not received, use Lackland AFB (Kelly Fld Annex) altimeter setting: increase all DA/MDA 60 feet and all visibilities ¼ mile. Helicopter visibility reduction below ¾ SM NA. Night landing: Rwy 16 NA.

MISSED APPROACH: Climb to 1300 then climbing left turn to 3000 direct SHEOL and hold.

AWOS-3 119.25	SAN ANTONIO APP CON 118.05 353.5	UNICOM 122.8 (CTAF) 0
-------------------------	--	---------------------------------



ELEV 774	TDZE 769
----------	----------



CATEGORY	A	B	C	D
LPV DA	1019-7/8		250 (300-7/8)	NA
LNAV/VNAV DA	1127-1¼		358 (400-1¼)	NA
LNAV MDA	1200-1	431 (500-1)	1200-1½ 431 (500-1½)	NA
C CIRCLING	1200-1 426 (500-1)	1380-1 606 (700-1)	1580-2¼ 806 (900-2¼)	NA

SC-3, 20 FEB 2025 to 20 MAR 2025

SC-3, 20 FEB 2025 to 20 MAR 2025