

| | | |
|---|------------------------|---|
| VORTAC LNK 116.1 Chan 108 | APP CRS 196° | Rwy Idg 4201 TDZE 1500 Apt Elev 1500 |
|---|------------------------|---|

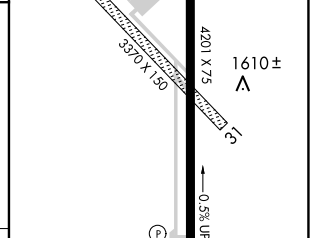
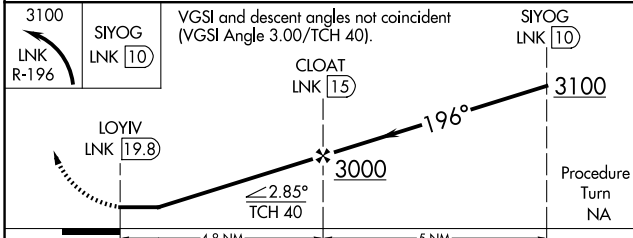
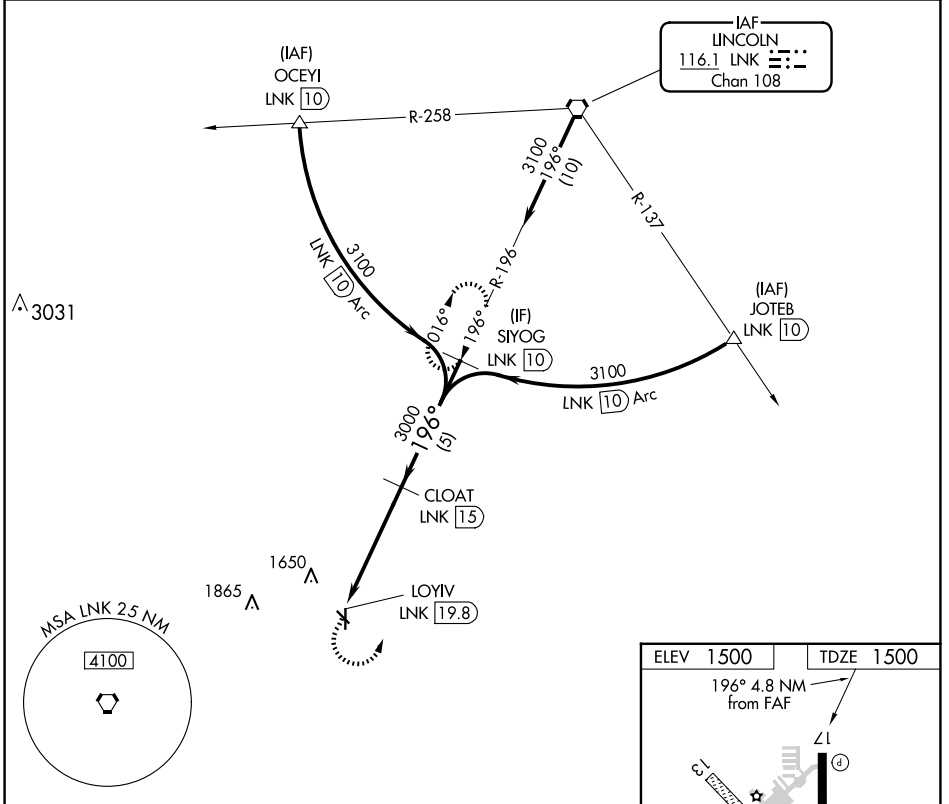
VOR/DME RWY 17

CRETE MUNI (CEK)

⚠ Rwy 17 Straight-in and Circling minimums NA at night. Use Lincoln altimeter setting; when not received, use Beatrice altimeter setting. Helicopter visibility reduction below 1 SM NA.

⚠ NA MISSED APPROACH: Climbing left turn to 3100 via LNK VORTAC R-196 to SIYOG/10 DME and hold.

| | |
|-------------------------------------|-------------------------------|
| OMAHA APP CON 124.0 270.3 | UNICOM 122.8 (CTAF) |
|-------------------------------------|-------------------------------|



| CATEGORY | A | B | C | D |
|----------|--------|-------------|---|----|
| S-17 | 2080-1 | 580 (600-1) | | NA |
| CIRCLING | 2140-1 | 640 (700-1) | | NA |

HIRL Rwy 17-35
REIL Rwy 17 and 35

NC-2, 20 FEB 2025 to 20 MAR 2025

NC-2, 20 FEB 2025 to 20 MAR 2025