

ELBERTON, GEORGIA

AL-6567 (FAA)

23278

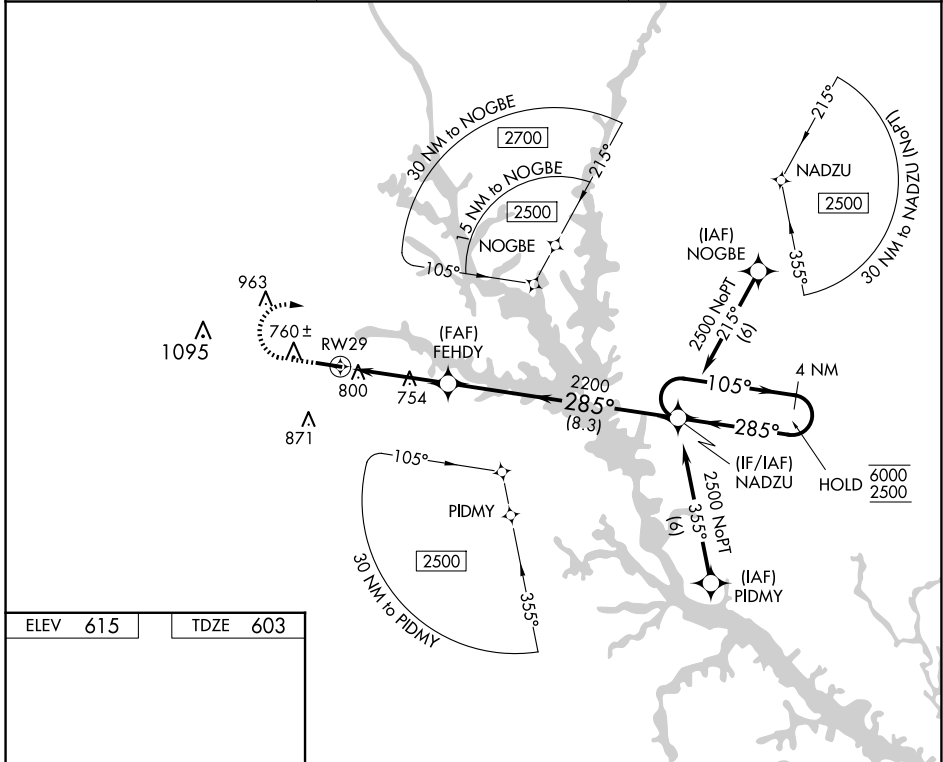
WAAS CH 61145 W29A	APP CRS 285°	Rwy Idg TDZE Apt Elev	5004 603 615
--	------------------------	-----------------------------	---

RNAV (GPS) RWY 29

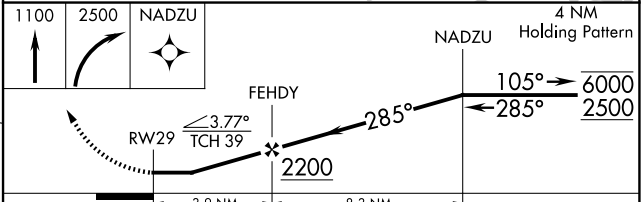
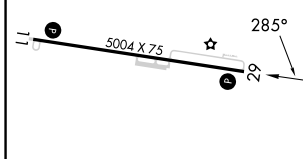
ELBERT COUNTY-PATZ FLD (EBA)

RNP APCH - GPS.	MISSED APPROACH: Climb to 1100 then climbing right turn to 2500 direct NADZU and hold.
-----------------	--

AWOS-3 118.15	ATLANTA CENTER 127.5 316.05	UNICOM 122.8 (CTAF)
-------------------------	---------------------------------------	-------------------------------



ELEV 615	TDZE 603
----------	----------



CATEGORY	A	B	C	D
LP MDA	1020-1	417 (500-1)	1020-1 $\frac{1}{8}$ 417 (500-1 $\frac{1}{8}$)	NA
LNAV MDA	1100-1	497 (500-1)	1100-1 $\frac{3}{8}$ 497 (500-1 $\frac{3}{8}$)	NA
CIRCLING	1160-1	545 (600-1)	1280-1 $\frac{3}{4}$ 665 (700-1 $\frac{3}{4}$)	NA

MIRL Rwy 11-29

ELBERTON, GEORGIA
Amdt 1B 05OCT23

34°06'N-82°49'W

ELBERT COUNTY-PATZ FLD (EBA)

RNAV (GPS) RWY 29

SE-4, 20 FEB 2025 to 20 MAR 2025

SE-4, 20 FEB 2025 to 20 MAR 2025