

APP CRS	Rwy Idg	<b>4870</b>
<b>010°</b>	TDZE	<b>722</b>
	Apt Elev	<b>726</b>

# RNAV (GPS) RWY 1

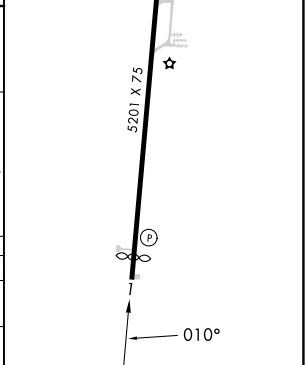
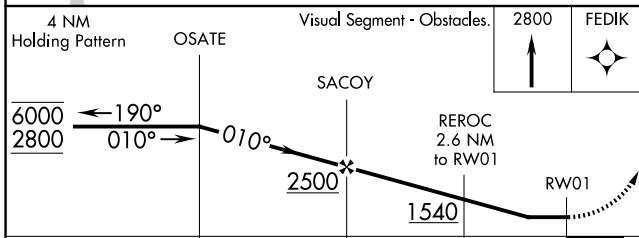
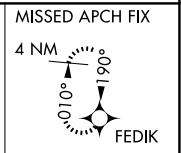
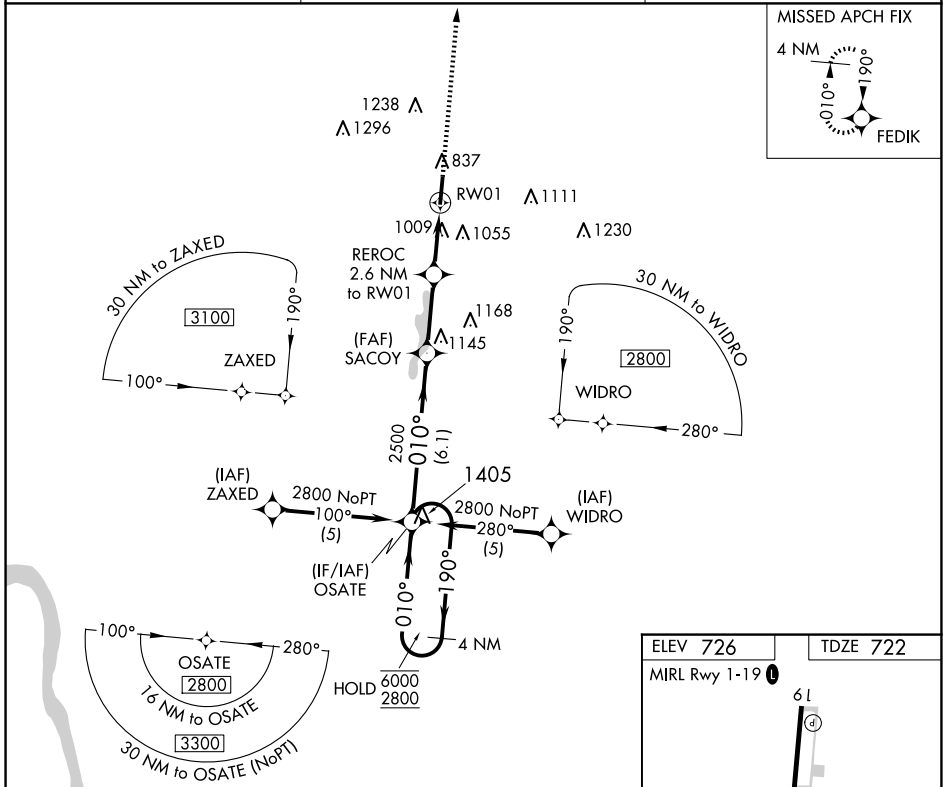
JAMES A RHODES (JRO)

RNP APCH - GPS.

**Procedure NA at night. Rwy 1 helicopter visibility reduction below 1 SM NA.**

MISSED APPROACH: Climb to 2800 direct FEDIK and hold.

AWOS-3PT <b>118.825</b>	HUNTINGTON APP CON <b>128.4 270.1</b>	UNICOM <b>122.7 (CTAF) 0</b>
----------------------------	--	---------------------------------



CATEGORY	A	B	C	D
RNAV MDA	1300-1	578 (600-1)	1300-1½	578 (600-1½)
CIRCLING	1340-1 614 (700-1)	1480-1 754 (800-1)	1680-3	954 (1000-3)

EC-2, 20 FEB 2025 to 20 MAR 2025

EC-2, 20 FEB 2025 to 20 MAR 2025