

APP CRS **190°**
 Rwy Idg **5201**
 TDZE **726**
 Apt Elev **726**

RNAV (GPS) RWY 19

JAMES A RHODES (JRO)

RNP APCH - GPS.

▼ Procedure NA at night.
▲ Rwy 19 helicopter visibility reduction below 1 SM NA.

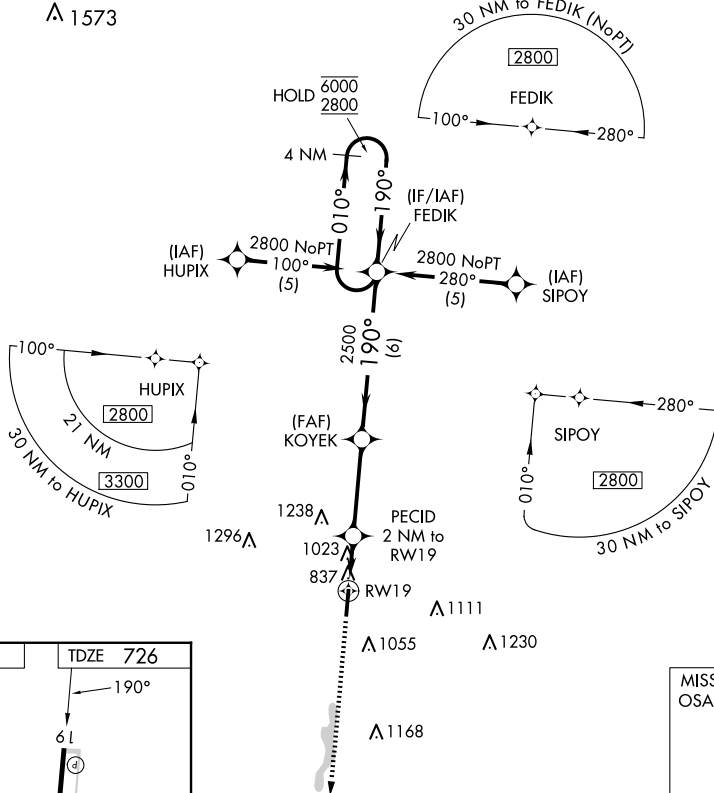
MISSED APPROACH: Climb to 2800 direct OSATE and hold.

AWOS-3PT **118.825**

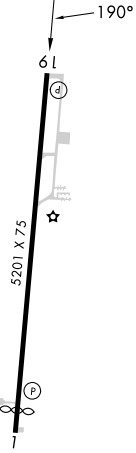
HUNTINGTON APP CON **128.4 270.1**

UNICOM **122.7 (CTAF) 0**

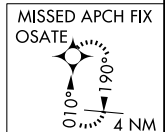
▲ 1573



ELEV 726 TDZE 726



MIRL Rwy 1-19 **0**



2800	OSATE	VGSI and descent angles not coincident (VGSI Angle 4.00/TCH 45).		FEDIK	4 NM Holding Pattern
		KOYEK	PECID 2 NM to RW19	2500	6000 2800
RW19		3.32° TCH 40	1460	190°	010°
2 NM		3.5 NM		6 NM	
CATEGORY	A	B	C	D	
LNAV MDA	1280-1	554 (600-1)	1280-1½	554 (600-1½)	
CIRCLING	1340-1 614 (700-1)	1480-1 754 (800-1)	1680-3	954 (1000-3)	

EC-2, 20 FEB 2025 to 20 MAR 2025

EC-2, 20 FEB 2025 to 20 MAR 2025