

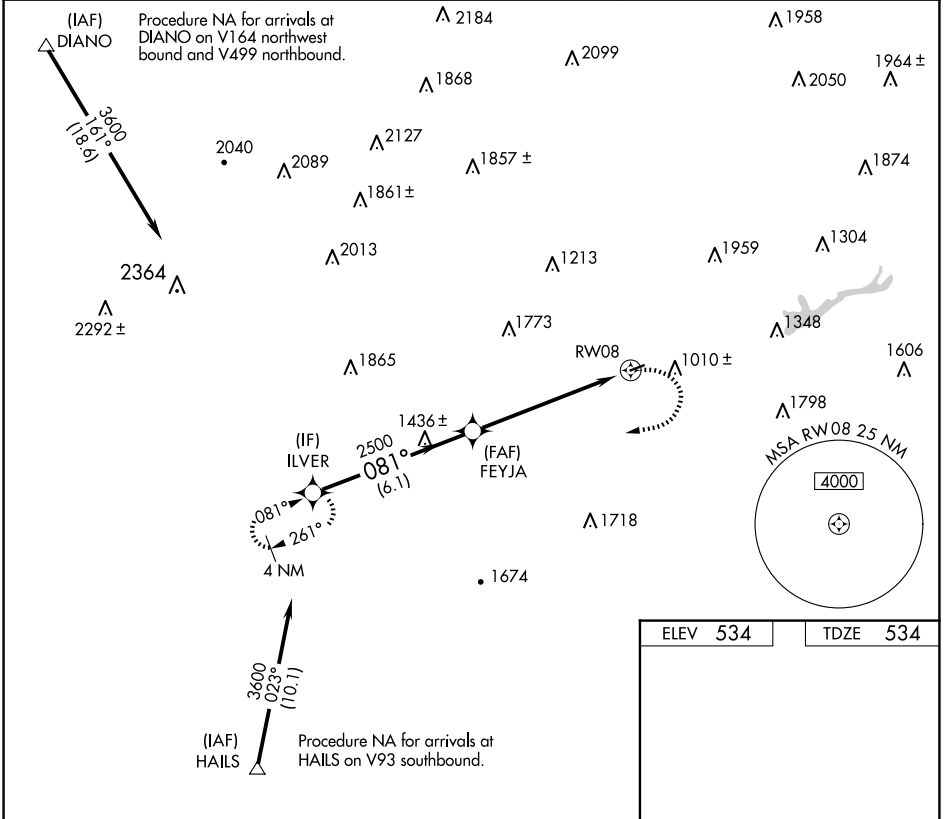
WAAS CH <b>99421</b> <b>W08A</b>	APP CRS <b>081°</b>	Rwy ldg TDZE Apt Elev <b>3000</b> <b>534</b> <b>534</b>
--	------------------------	--

# RNAV (GPS) RWY 8

JAKE ARNER MEML (22N)

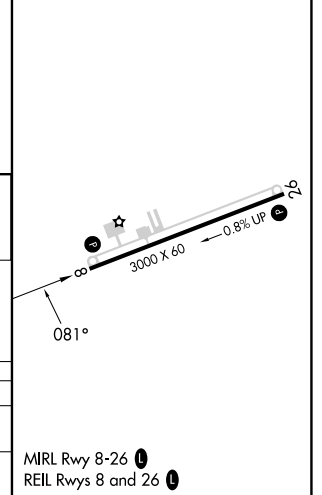
RNP APCH. <p>When local altimeter setting not received, use Lehigh Valley Intl altimeter setting and increase all MDA 60 feet. Rwy 8 helicopter visibility reduction below 3/4 SM NA.</p>	MISSED APPROACH: Climbing right turn to 3600 direct ILVER and hold.
--	---

AWOS-3PT <b>119.350</b>	ALLENTOWN APP CON <b>119.65 124.45 351.8</b>	UNICOM <b>123.05 (CTAF) 0</b>
----------------------------	---	----------------------------------



ELEV 534	TDZE 534
----------	----------

ILVER		Visual Segment - Obstacles.		3600	ILVER
3600		FEYJA			
081°		2500			
6.1 NM		6.1 NM		RWY 08	
CATEGORY	A	B	C	D	
LP MDA	1540-1¼ 1006 (1100-1¼)	1540-1½ 1006 (1100-1½)	NA		
LNAV MDA	1600-1¼ 1066 (1100-1¼)	1600-1½ 1066 (1100-1½)	NA		



NE-4, 20 FEB 2025 to 20 MAR 2025

NE-4, 20 FEB 2025 to 20 MAR 2025