

# RNAV (GPS) RWY 36

BUFFALO MUNI (CFE)

APP CRS <b>360°</b>	Rwy ldg TDZE Apt Elev	<b>3200</b> <b>968</b> <b>968</b>
------------------------	-----------------------------	---

RNP APCH - GPS.  
 Rwy 36 helicopter visibility reduction below 3/4 SM NA.

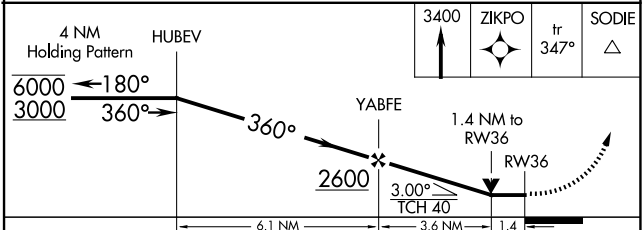
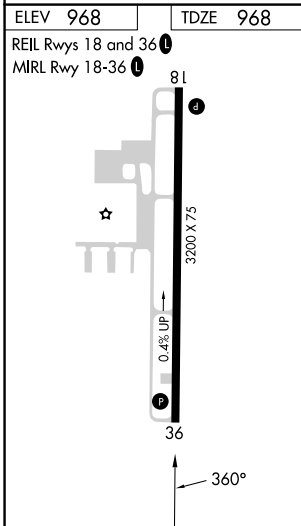
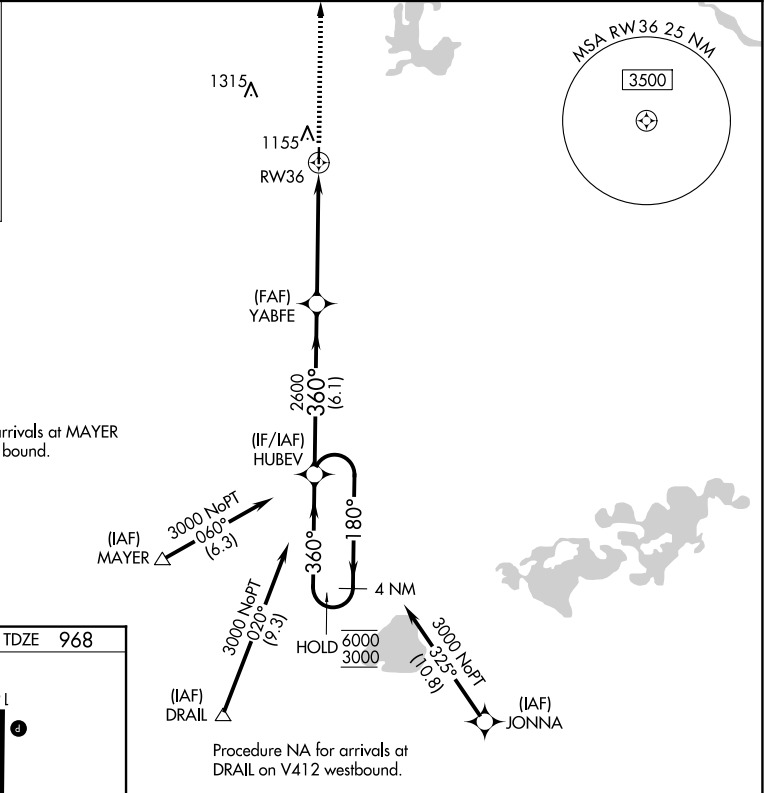
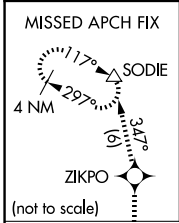
MISSED APPROACH: Climb to 3400 direct ZIKPO and on track 347° to SODIE and hold.

AWOS-3PT  
**120.45**

MINNEAPOLIS APP CON  
**126.5 335.65**

GCO  
**121.725**

UNICOM  
**122.8** (CTAF)



CATEGORY	A	B	C	D
LNAV MDA	1460-1	492 (500-1)	1460-1 <sup>3</sup> / <sub>8</sub> 492 (500-1 <sup>3</sup> / <sub>8</sub> )	NA
<b>C</b> CIRCLING	1460-1 492 (500-1)	1540-1 572 (600-1)	1580-1 <sup>1</sup> / <sub>2</sub> 612 (700-1 <sup>1</sup> / <sub>2</sub> )	NA

NC-1, 20 FEB 2025 to 20 MAR 2025

NC-1, 20 FEB 2025 to 20 MAR 2025