

WAAS CH 53530 W32A	APP CRS 317°	Rwy Idg TDZE 1082 Apt Elev 1083
--	------------------------	---

RNAV (GPS) RWY 32

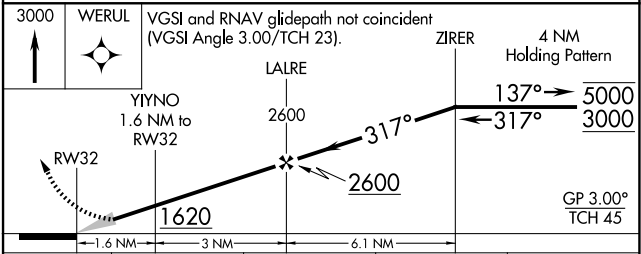
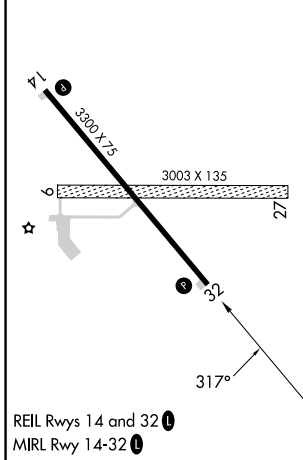
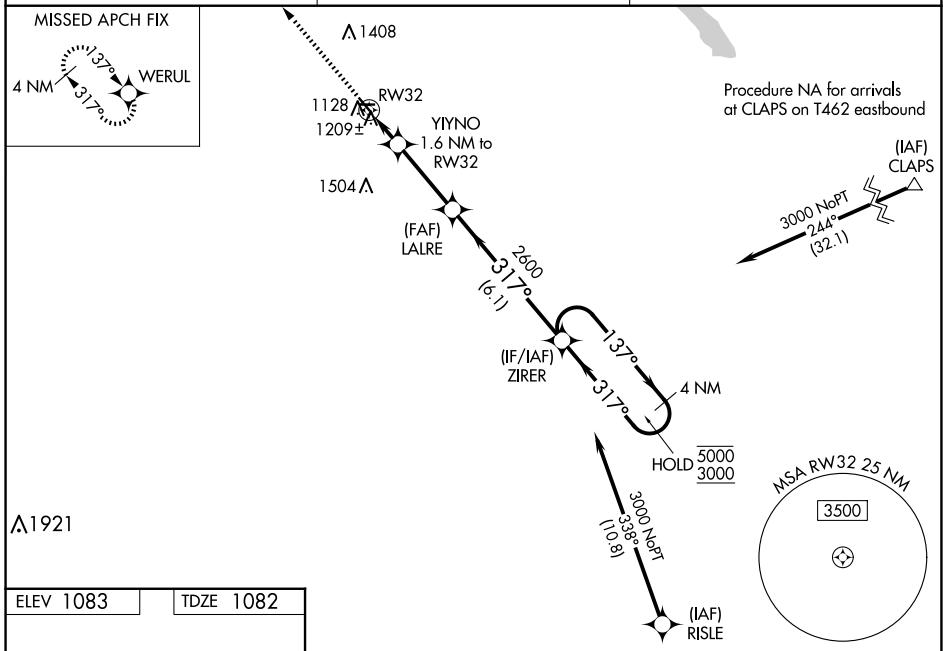
LAC QUI PARLE COUNTY (DXX)

RNP APCH - GPS.

Baro-VNAV NA when using Appleton Muni altimeter setting. For uncompensated Baro-VNAV systems, LNAV/VNAV NA below -17°C or above 54°C. Circling NA to Rwys 9 and 27. When local altimeter setting not received, use Appleton Muni altimeter setting: increase LPV DA to 1329 feet; increase LNAV/VNAV DA to 1409 feet and visibility ½ SM; increase all MDAs 60 feet and Circling Cat C visibility ½ SM.

MISSED APPROACH: Climb to 3000 direct WERUL and hold.

AWOS-3 118.975	MINNEAPOLIS CENTER 128.5 306.2	UNICOM 122.8 (CTAF) 0
--------------------------	--	---------------------------------



CATEGORY	A	B	C	D
LPV DA	1282-¾ 200 (200-¾)			NA
LNAV/VNAV DA	1363-⅞ 281 (300-⅞)			NA
LNAV MDA	1460-1	378 (400-1)	1460-1⅛ 378 (400-1⅛)	NA
C CIRCLING	1640-1	557 (600-1)	1820-2 737 (800-2)	NA

NC-1, 20 FEB 2025 to 20 MAR 2025

NC-1, 20 FEB 2025 to 20 MAR 2025